

## Product datasheet for **TA334057**

### ENT2 (SLC29A2) Rabbit Polyclonal Antibody

#### Product data:

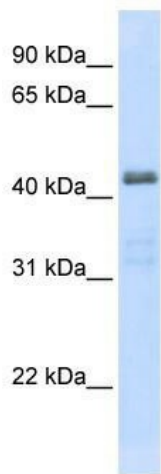
Product Type:	Primary Antibodies
Applications:	WB
Recommended Dilution:	WB
Reactivity:	Human
Host:	Rabbit
Isotype:	IgG
Clonality:	Polyclonal
Immunogen:	The immunogen for Anti-SLC29A2 Antibody: synthetic peptide directed towards the C terminal of human SLC29A2. Synthetic peptide located within the following region: PLLVCLRFLFVPLFMLCHVPQRSRLPILFPQDAYFITFMLLFAVSNLYLV
Formulation:	Liquid. Purified antibody supplied in 1x PBS buffer with 0.09% (w/v) sodium azide and 2% sucrose. <i>Note that this product is shipped as lyophilized powder to China customers.</i>
Purification:	Affinity Purified
Conjugation:	Unconjugated
Storage:	Store at -20°C as received.
Stability:	Stable for 12 months from date of receipt.
Predicted Protein Size:	50 kDa
Gene Name:	solute carrier family 29 member 2
Database Link:	<a href="#">NP_001523</a> <a href="#">Entrez Gene 3177 Human Q14542</a>
Background:	SLC29A2 mediates equilibrative transport of purine, pyrimidine nucleosides and the purine base hypoxanthine. It is less sensitive than SLC29A1 to inhibition by nitrobenzylthioinosine (NBMPR), dipyridamole, dilazep and draflazine.
Synonyms:	DER12; ENT2; HNP36
Note:	Immunogen sequence homology: Horse: 100%; Human: 100%; Dog: 93%; Pig: 93%; Bovine: 93%; Rabbit: 93%; Rat: 79%; Guinea pig: 79%



[View online »](#)

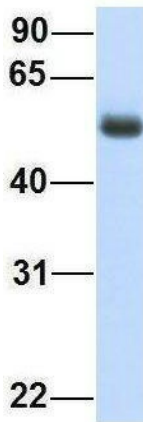
Protein Families: Transmembrane

**Product images:**



WB Suggested Anti-SLC29A2 Antibody Titration:  
0.2-1 ug/ml; ELISA Titer: 1:312500; Positive  
Control: Transfected 293T

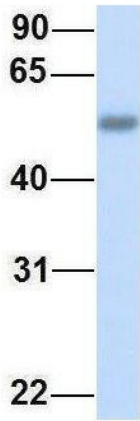
**SLC29A2**



Rabbit Anti-SLC29A2  
Sample Type: Human Fetal Lung  
Antibody Concentration: 1ug/mL

Host: Rabbit; Target Name: SLC29A2; Sample  
Tissue: Human Fetal Lung; Antibody Dilution: 1.0  
ug/ml

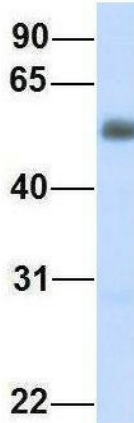
### SLC29A2



Rabbit Anti-SLC29A2  
Sample Type: Human Fetal Liver  
Antibody Concentration: 1ug/mL

Host: Rabbit; Target Name: SLC29A2; Sample  
Tissue: Human Fetal Liver; Antibody Dilution: 1.0  
ug/ml

### SLC29A2



Rabbit Anti-SLC29A2  
Sample Type: Human Fetal  
Muscle  
Antibody Concentration: 1ug/mL

Host: Rabbit; Target Name: SLC29A2; Sample  
Tissue: Human Fetal Muscle; Antibody Dilution:  
1.0 ug/ml