

Product datasheet for **TA334056**

ENT2 (SLC29A2) Rabbit Polyclonal Antibody

Product data:

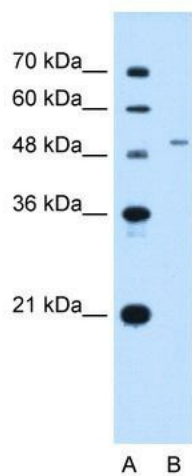
Product Type:	Primary Antibodies
Applications:	IHC, WB
Recommended Dilution:	WB, IHC
Reactivity:	Human
Host:	Rabbit
Isotype:	IgG
Clonality:	Polyclonal
Immunogen:	The immunogen for Anti-SLC29A2 Antibody: synthetic peptide directed towards the N terminal of human SLC29A2. Synthetic peptide located within the following region: ARILSTNHTGPEDAFNFNWVTLTLLSQLPLLLFTLLNSFLYQCVPETVRIL
Formulation:	Liquid. Purified antibody supplied in 1x PBS buffer with 0.09% (w/v) sodium azide and 2% sucrose. <i>Note that this product is shipped as lyophilized powder to China customers.</i>
Purification:	Affinity Purified
Conjugation:	Unconjugated
Storage:	Store at -20°C as received.
Stability:	Stable for 12 months from date of receipt.
Predicted Protein Size:	50 kDa
Gene Name:	solute carrier family 29 member 2
Database Link:	NP_001523 Entrez Gene 3177 Human Q14542
Background:	SLC29A2 mediates equilibrative transport of purine, pyrimidine nucleosides and the purine base hypoxanthine. It is less sensitive than SLC29A1 to inhibition by nitrobenzylthioinosine (NBMPR), dipyridamole, dilazep and draflazine.
Synonyms:	DER12; ENT2; HNP36
Note:	Immunogen sequence homology: Human: 100%; Rabbit: 91%



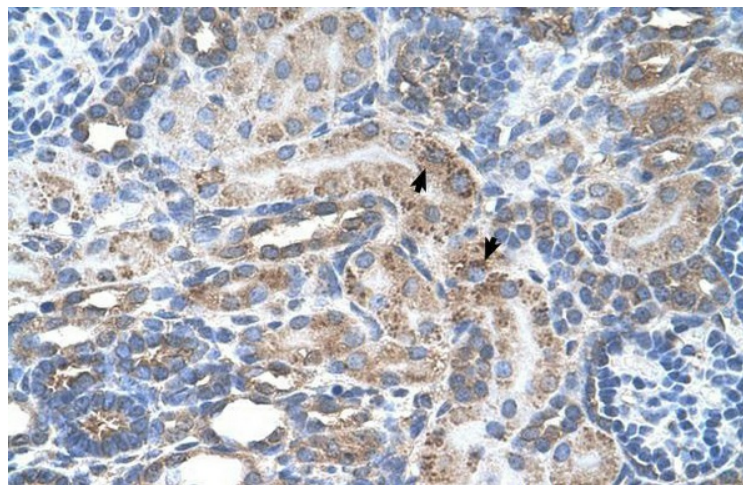
[View online »](#)

Protein Families: Transmembrane

Product images:



WB Suggested Antibody Titration: 2.5 ug/ml;
Positive Control: HepG2



Human kidney