

## Product datasheet for **TA334055**

### **KRTHB3 (KRT83) Rabbit Polyclonal Antibody**

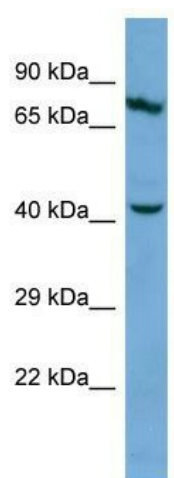
#### **Product data:**

<b>Product Type:</b>	Primary Antibodies
<b>Applications:</b>	WB
<b>Recommended Dilution:</b>	WB
<b>Reactivity:</b>	Human
<b>Host:</b>	Rabbit
<b>Isotype:</b>	IgG
<b>Clonality:</b>	Polyclonal
<b>Immunogen:</b>	The immunogen for Anti-KRT83 Antibody is: synthetic peptide directed towards the middle region of Human KRT83. Synthetic peptide located within the following region: EEVALRATAENEFVALKKDVDCAYLRKSDLEANVEALIQEIDFLRRLYEE
<b>Formulation:</b>	Liquid. Purified antibody supplied in 1x PBS buffer with 0.09% (w/v) sodium azide and 2% sucrose.
<b>Purification:</b>	Affinity Purified
<b>Conjugation:</b>	Unconjugated
<b>Storage:</b>	Store at -20°C as received.
<b>Stability:</b>	Stable for 12 months from date of receipt.
<b>Predicted Protein Size:</b>	49 kDa
<b>Gene Name:</b>	keratin 83
<b>Database Link:</b>	<a href="#">NP_002273</a> <a href="#">Entrez Gene 3889 Human</a> <a href="#">P78385</a>
<b>Background:</b>	The function of this protein remains unknown.
<b>Synonyms:</b>	Hb-3; HB3; KRTHB3
<b>Note:</b>	Immunogen sequence homology: Dog: 100%; Human: 100%; Pig: 93%; Rat: 93%; Horse: 93%; Bovine: 93%; Mouse: 91%; Rabbit: 86%; Guinea pig: 86%



[View online »](#)

## Product images:



Host: Rabbit; Target Name: KRT83; Sample  
Tissue: COLO205 Whole Cell lysates; Antibody  
Dilution: 1.0 ug/ml