

## Product datasheet for **TA334053**

### Solute carrier family 22 member 18 (SLC22A18) Rabbit Polyclonal Antibody

#### Product data:

Product Type:	Primary Antibodies
Applications:	WB
Recommended Dilution:	WB
Reactivity:	Human
Host:	Rabbit
Isotype:	IgG
Clonality:	Polyclonal
Immunogen:	The immunogen for Anti-SLC22A18 Antibody: synthetic peptide directed towards the N terminal of human SLC22A18. Synthetic peptide located within the following region: AASSPALPGVYLLFASRLPGALMHTLPAAQMVIDLSAPEERPAALGRLG
Formulation:	Liquid. Purified antibody supplied in 1x PBS buffer with 0.09% (w/v) sodium azide and 2% sucrose. <i>Note that this product is shipped as lyophilized powder to China customers.</i>
Purification:	Affinity Purified
Conjugation:	Unconjugated
Storage:	Store at -20°C as received.
Stability:	Stable for 12 months from date of receipt.
Predicted Protein Size:	45 kDa
Gene Name:	solute carrier family 22 member 18
Database Link:	<a href="#">NP_002546</a> <a href="#">Entrez Gene 5002 Human Q96B11</a>



[View online »](#)

**Background:**

This gene is one of several tumor-suppressing subtransferable fragments located in the imprinted gene domain of 11p15.5, an important tumor-suppressor gene region. Alterations in this region have been associated with the Beckwith-Wiedemann syndrome, Wilms tumor, rhabdomyosarcoma, adrenocortical carcinoma, and lung, ovarian, and breast cancer. This gene may play a role in malignancies and disease that involve this region as well as the transport of chloroquine- and quinidine-related compounds in the kidney. This gene is one of several tumor-suppressing subtransferable fragments located in the imprinted gene domain of 11p15.5, an important tumor-suppressor gene region. Alterations in this region have been associated with the Beckwith-Wiedemann syndrome, Wilms tumor, rhabdomyosarcoma, adrenocortical carcinoma, and lung, ovarian, and breast cancer. This gene may play a role in malignancies and disease that involve this region as well as the transport of chloroquine- and quinidine-related compounds in the kidney. Two alternative transcripts encoding the same isoform have been described.

**Synonyms:**

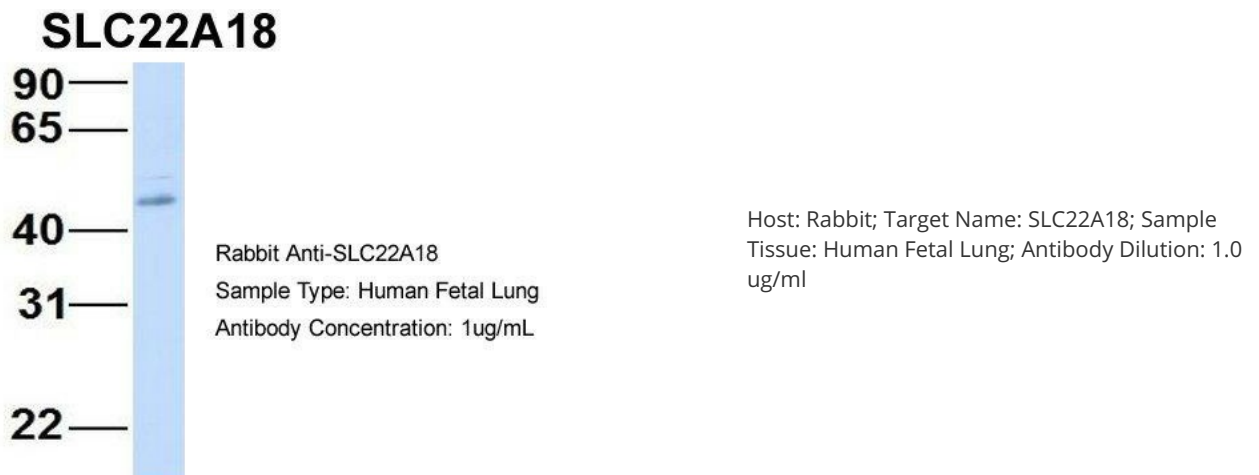
BWR1A; BWSCR1A; HET; IMPT1; ITM; ORCTL2; p45-BWR1A; SLC22A1L; TSSC5

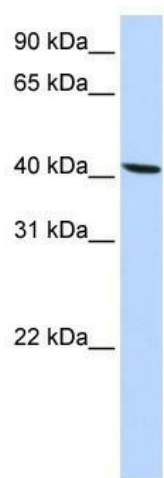
**Note:**

Immunogen sequence homology: Human: 100%; Pig: 93%; Horse: 93%; Guinea pig: 93%; Mouse: 86%; Bovine: 86%; Rat: 79%

**Protein Families:**

Druggable Genome, Transmembrane

**Product images:**



WB Suggested Anti-SLC22A18 Antibody Titration:  
0.2-1 ug/ml; ELISA Titer: 1:312500; Positive  
Control: HepG2 cell lysate; SLC22A18 is supported  
by BioGPS gene expression data to be expressed  
in HepG2