

Product datasheet for **TA334051**

AE2 (SLC4A2) Rabbit Polyclonal Antibody

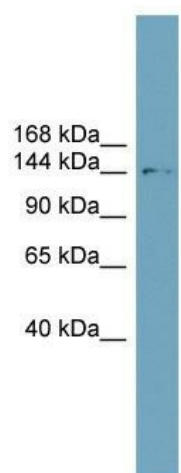
Product data:

Product Type:	Primary Antibodies
Applications:	WB
Recommended Dilution:	WB
Reactivity:	Human, Mouse
Host:	Rabbit
Isotype:	IgG
Clonality:	Polyclonal
Immunogen:	The immunogen for Anti-SLC4A2 Antibody: synthetic peptide directed towards the N terminal of human SLC4A2. Synthetic peptide located within the following region: MSSAPRRPAKGADSFCTPEPESLGPSTPGFPEQEDELHRTLGVRFEEI
Formulation:	Liquid. Purified antibody supplied in 1x PBS buffer with 0.09% (w/v) sodium azide and 2% sucrose. <i>Note that this product is shipped as lyophilized powder to China customers.</i>
Purification:	Affinity Purified
Conjugation:	Unconjugated
Storage:	Store at -20°C as received.
Stability:	Stable for 12 months from date of receipt.
Predicted Protein Size:	137 kDa
Gene Name:	solute carrier family 4 member 2
Database Link:	NP_003031 Entrez Gene 20535 Mouse Entrez Gene 6522 Human P04920
Background:	SLC4A2 is a plasma membrane anion exchange protein of wide distribution.
Synonyms:	AE2; BND3L; EPB3L1; HKB3; NBND3
Note:	Immunogen sequence homology: Pig: 100%; Human: 100%; Mouse: 100%; Yeast: 100%; Rabbit: 100%; Horse: 93%; Guinea pig: 93%; Dog: 92%; Rat: 92%; Bovine: 86%
Protein Families:	Transmembrane



[View online »](#)

Product images:



WB Suggested Anti-SLC4A2 Antibody Titration:
0.2-1 ug/ml; ELISA Titer: 1:62500; Positive Control:
ACHN cell lysate; SLC4A2 is supported by BioGPS
gene expression data to be expressed in ACHN