

Product datasheet for **TA334050**

SLC6A1 Rabbit Polyclonal Antibody

Product data:

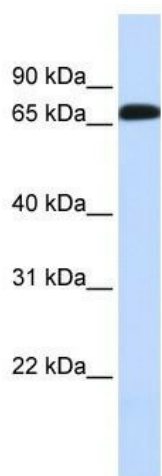
Product Type:	Primary Antibodies
Applications:	IHC, WB
Recommended Dilution:	WB, IHC
Reactivity:	Human, Mouse
Host:	Rabbit
Isotype:	IgG
Clonality:	Polyclonal
Immunogen:	The immunogen for Anti-SLC6A1 Antibody: synthetic peptide directed towards the middle region of human SLC6A1. Synthetic peptide located within the following region: CCINSCTSMFAGFVIFSIVGFMAHVTKRSIADVAASGPGFLAFLAYPEAVT
Formulation:	Liquid. Purified antibody supplied in 1x PBS buffer with 0.09% (w/v) sodium azide and 2% sucrose. <i>Note that this product is shipped as lyophilized powder to China customers.</i>
Purification:	Affinity Purified
Conjugation:	Unconjugated
Storage:	Store at -20°C as received.
Stability:	Stable for 12 months from date of receipt.
Predicted Protein Size:	67 kDa
Gene Name:	solute carrier family 6 member 1
Database Link:	NP_003033 Entrez Gene 232333 Mouse Entrez Gene 6529 Human P30531
Background:	SLC6A1 terminates the action of GABA by its high affinity sodium-dependent reuptake into presynaptic terminals. This protein is the target of psychomotor stimulants such as amphetamines or cocaine.
Synonyms:	GABATHG; GABATR; GAT1
Note:	Immunogen sequence homology: Dog: 100%; Pig: 100%; Rat: 100%; Horse: 100%; Human: 100%; Mouse: 100%; Bovine: 100%; Guinea pig: 100%; Zebrafish: 93%; Rabbit: 86%



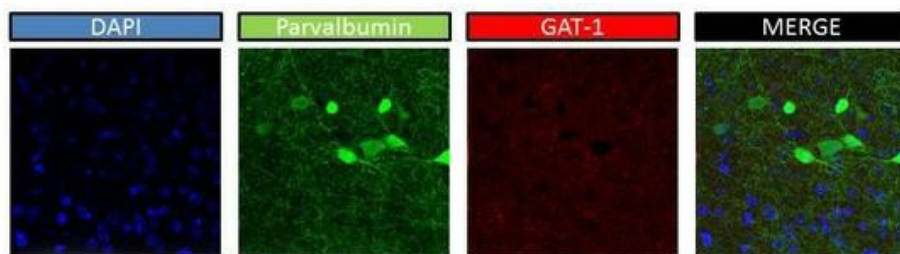
[View online »](#)

Protein Families: Druggable Genome, Transmembrane

Product images:



WB Suggested Anti-SLC6A1 Antibody Titration:
0.2-1 ug/ml; ELISA Titer: 1:62500; Positive Control:
Human Liver



mouse brain