

## Product datasheet for **TA334047**

### **CAT1 (SLC7A1) Rabbit Polyclonal Antibody**

#### **Product data:**

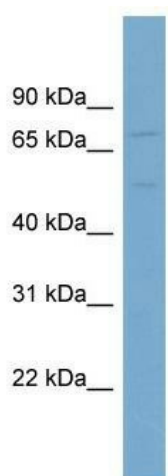
<b>Product Type:</b>	Primary Antibodies
<b>Applications:</b>	WB
<b>Recommended Dilution:</b>	WB
<b>Reactivity:</b>	Human
<b>Host:</b>	Rabbit
<b>Isotype:</b>	IgG
<b>Clonality:</b>	Polyclonal
<b>Immunogen:</b>	The immunogen for Anti-SLC7A1 Antibody: synthetic peptide directed towards the N terminal of human SLC7A1. Synthetic peptide located within the following region: ELWAFITGWNLILSYIIGTSSVARAWSATFDELIGRPIGEFSRTHMTLNA
<b>Formulation:</b>	Liquid. Purified antibody supplied in 1x PBS buffer with 0.09% (w/v) sodium azide and 2% sucrose. <i>Note that this product is shipped as lyophilized powder to China customers.</i>
<b>Purification:</b>	Affinity Purified
<b>Conjugation:</b>	Unconjugated
<b>Storage:</b>	Store at -20°C as received.
<b>Stability:</b>	Stable for 12 months from date of receipt.
<b>Predicted Protein Size:</b>	68 kDa
<b>Gene Name:</b>	solute carrier family 7 member 1
<b>Database Link:</b>	<a href="#">NP_003036</a> <a href="#">Entrez Gene 6541 Human</a> <a href="#">P30825</a>
<b>Background:</b>	SLC7A1 is a high-affinity, low capacity permease involved in the transport of the cationic amino acids (arginine, lysine and ornithine) in non-hepatic tissues. It may also function as an ecotropic retroviral leukemia receptor.
<b>Synonyms:</b>	ATRC1; CAT-1; ERR; HCAT1; REC1L
<b>Note:</b>	Immunogen sequence homology: Horse: 100%; Human: 100%; Bovine: 93%; Pig: 92%; Rat: 92%; Mouse: 92%; Guinea pig: 92%; Dog: 86%; Rabbit: 79%



[View online »](#)

Protein Families: Druggable Genome, Transmembrane

### Product images:



WB Suggested Anti-SLC7A1 Antibody Titration: 0.2-1 ug/ml; Positive Control: OVCAR-3 cell lysate; SLC7A1 is strongly supported by BioGPS gene expression data to be expressed in Human OVCAR3 cells