

Product datasheet for **TA334046**

SLC9A1 Rabbit Polyclonal Antibody

Product data:

Product Type:	Primary Antibodies
Applications:	WB
Recommended Dilution:	WB
Reactivity:	Human
Host:	Rabbit
Isotype:	IgG
Clonality:	Polyclonal
Immunogen:	The immunogen for Anti-SLC9A1 Antibody: synthetic peptide directed towards the middle region of human SLC9A1. Synthetic peptide located within the following region: RSKETSSPGTDDVFTAPSDSPSSQRIQRCLSDPGPHPEPGEGEPFFPKG
Formulation:	Liquid. Purified antibody supplied in 1x PBS buffer with 0.09% (w/v) sodium azide and 2% sucrose. <i>Note that this product is shipped as lyophilized powder to China customers.</i>
Purification:	Affinity Purified
Conjugation:	Unconjugated
Storage:	Store at -20°C as received.
Stability:	Stable for 12 months from date of receipt.
Predicted Protein Size:	91 kDa
Gene Name:	solute carrier family 9 member A1
Database Link:	NP_003038 Entrez Gene 6548 Human P19634
Background:	This gene encodes a Na ⁺ /H ⁺ antiporter that is a member of the solute carrier family 9. The encoded protein is a plasma membrane transporter that is expressed in the kidney and intestine. This protein plays a central role in regulating pH homeostasis, cell migration and cell volume. This protein may also be involved in tumor growth. [provided by RefSeq, Sep 2011]
Synonyms:	APNH; NHE-1; NHE1; PPP1R143



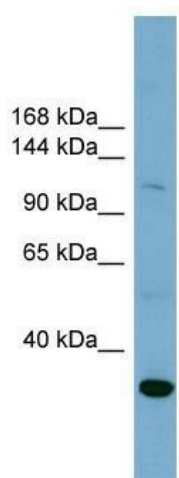
[View online »](#)

Note: Immunogen sequence homology: Dog: 100%; Pig: 100%; Rat: 100%; Horse: 100%; Human: 100%; Mouse: 100%; Bovine: 100%; Rabbit: 100%; Guinea pig: 93%

Protein Families: Druggable Genome, Transmembrane

Protein Pathways: Cardiac muscle contraction, Regulation of actin cytoskeleton

Product images:



WB Suggested Anti-SLC9A1 Antibody Titration: 0.2-1 ug/ml; ELISA Titer: 1:312500; Positive Control: PANC1 cell lysate; SLC9A1 is supported by BioGPS gene expression data to be expressed in PANC1