

Product datasheet for **TA334045**

Monocarboxylic acid transporter 1 (SLC16A1) Rabbit Polyclonal Antibody

Product data:

Product Type:	Primary Antibodies
Applications:	IHC, WB
Recommended Dilution:	WB
Reactivity:	Human
Host:	Rabbit
Isotype:	IgG
Clonality:	Polyclonal
Immunogen:	The immunogen for Anti-SLC16A1 Antibody: synthetic peptide directed towards the middle region of human SLC16A1. Synthetic peptide located within the following region: EKAGKSGVKKDLHDANTDLIGRHPKQEKRVSFQTINQFLDLTLFTHRGFL
Formulation:	Liquid. Purified antibody supplied in 1x PBS buffer with 0.09% (w/v) sodium azide and 2% sucrose. <i>Note that this product is shipped as lyophilized powder to China customers.</i>
Purification:	Affinity Purified
Conjugation:	Unconjugated
Storage:	Store at -20°C as received.
Stability:	Stable for 12 months from date of receipt.
Predicted Protein Size:	54 kDa
Gene Name:	solute carrier family 16 member 1
Database Link:	NP_003042 Entrez Gene 6566 Human P53985
Background:	The protein encoded by this gene is a proton-linked monocarboxylate transporter that catalyzes the movement of many monocarboxylates, such as lactate and pyruvate, across the plasma membrane. Mutations in this gene are associated with erythrocyte lactate transporter defect. Alternatively spliced transcript variants have been found for this gene. [provided by RefSeq, Oct 2009]
Synonyms:	HHF7; MCT; MCT1; MCT1D

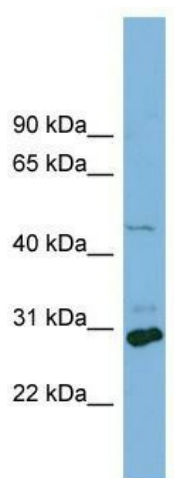


[View online »](#)

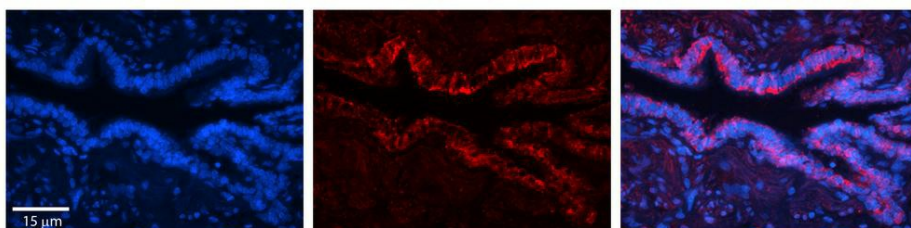
Note: Immunogen sequence homology: Human: 100%

Protein Families: Transmembrane

Product images:



WB Suggested Anti-SLC16A1 Antibody Titration: 0.2-1 ug/ml; ELISA Titer: 1:62500; Positive Control: HT1080 cell lysate; SLC16A1 is strongly supported by BioGPS gene expression data to be expressed in Human HT1080 cells



Rabbit Anti-SLC16A1 Antibody; Formalin Fixed Paraffin Embedded Tissue: Human Bronchial Epithelial Tissue; Observed Staining: Membrane and cytoplasmic; Primary Antibody Concentration: 1:100; Other Working Concentrations: 1/600; Secondary Antibody: Donkey a