

Product datasheet for **TA334044**

Monocarboxylic acid transporter 1 (SLC16A1) Rabbit Polyclonal Antibody

Product data:

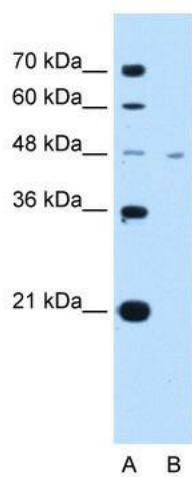
Product Type:	Primary Antibodies
Applications:	WB
Recommended Dilution:	WB
Reactivity:	Human
Host:	Rabbit
Isotype:	IgG
Clonality:	Polyclonal
Immunogen:	The immunogen for Anti-SLC16A1 Antibody: synthetic peptide directed towards the middle region of human SLC16A1. Synthetic peptide located within the following region: KPTKAGKDKSKASLEKAGKSGVKKDLHDANTDLIGRHPKQEKRSVFQTIN
Formulation:	Liquid. Purified antibody supplied in 1x PBS buffer with 0.09% (w/v) sodium azide and 2% sucrose. <i>Note that this product is shipped as lyophilized powder to China customers.</i>
Purification:	Affinity Purified
Conjugation:	Unconjugated
Storage:	Store at -20°C as received.
Stability:	Stable for 12 months from date of receipt.
Predicted Protein Size:	54 kDa
Gene Name:	solute carrier family 16 member 1
Database Link:	NP_003042 Entrez Gene 6566 Human P53985
Background:	SLC16A1 is a monocarboxylate transporter (MCT1) that mediates the movement of lactate and pyruvate across cell membranes Import and export of these substrates by tissues such as erythrocytes, muscle, intestine, and kidney are ascribed largely to the action of a proton-coupled MCT.
Synonyms:	HHF7; MCT; MCT1; MCT1D
Note:	Immunogen sequence homology: Human: 100%



[View online »](#)

Protein Families: Transmembrane

Product images:



WB Suggested Anti-SLC16A1 Antibody Titration:
2.5 ug/ml; Positive Control: Jurkat cell lysate