

Product datasheet for **TA334043**

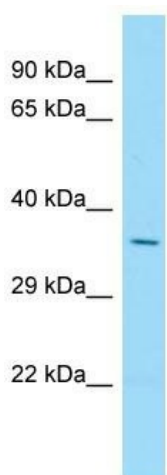
SLC34A1 Rabbit Polyclonal Antibody

Product data:

Product Type:	Primary Antibodies
Applications:	WB
Recommended Dilution:	WB
Reactivity:	Rat
Host:	Rabbit
Isotype:	IgG
Clonality:	Polyclonal
Immunogen:	The immunogen for Anti-Slc34a1 Antibody is: synthetic peptide directed towards the N-terminal region of RAT Slc34a1. Synthetic peptide located within the following region: YVPSPQVLHRIPGTTTYAISLSPVALTEHSCPGEVLECHDPLPAKLAQ
Formulation:	Liquid. Purified antibody supplied in 1x PBS buffer with 0.09% (w/v) sodium azide and 2% sucrose. <i>Note that this product is shipped as lyophilized powder to China customers.</i>
Purification:	Affinity Purified
Conjugation:	Unconjugated
Storage:	Store at -20°C as received.
Stability:	Stable for 12 months from date of receipt.
Predicted Protein Size:	37 kDa
Gene Name:	solute carrier family 34 member 1
Database Link:	NP_003043 Entrez Gene 25548 Rat Q06495
Background:	The function of this protein remains unknown.
Synonyms:	FRTS2; NAPI-3; NPHLOP1; NPT2; NPTIIa; SLC11; SLC17A2
Note:	Immunogen sequence homology: Dog: 100%; Pig: 100%; Rat: 100%; Human: 100%; Mouse: 100%; Sheep: 100%; Bovine: 100%; Rabbit: 93%; Guinea pig: 93%; Horse: 92%
Protein Families:	Transmembrane



[View online »](#)

Product images:

Host: Rabbit
Target Name: Slc34a1
Sample Tissue: Rat Thymus Lysate
Antibody Dilution: 1.0 μ g/ml

Host: Rabbit; Target Name: Slc34a1; Sample Tissue: Rat Thymus lysates; Antibody Dilution: 1.0 ug/ml