

Product datasheet for **TA334041**

SLC22A2 Rabbit Polyclonal Antibody

Product data:

Product Type:	Primary Antibodies
Applications:	WB
Recommended Dilution:	WB
Reactivity:	Human
Host:	Rabbit
Isotype:	IgG
Clonality:	Polyclonal
Immunogen:	The immunogen for Anti-SLC22A2 Antibody: synthetic peptide directed towards the N terminal of human SLC22A2. Synthetic peptide located within the following region: MPTTVDDVLEHGGEFHHFQKQMFFLLALLSATFAPYVGVFLGFTPDHR
Formulation:	Liquid. Purified antibody supplied in 1x PBS buffer with 0.09% (w/v) sodium azide and 2% sucrose. <i>Note that this product is shipped as lyophilized powder to China customers.</i>
Purification:	Affinity Purified
Conjugation:	Unconjugated
Storage:	Store at -20°C as received.
Stability:	Stable for 12 months from date of receipt.
Predicted Protein Size:	62 kDa
Gene Name:	solute carrier family 22 member 2
Database Link:	NP_003049 Entrez Gene 6582 Human O15244



[View online »](#)

Background:

Polyspecific organic cation transporters in the liver, kidney, intestine, and other organs are critical for elimination of many endogenous small organic cations as well as a wide array of drugs and environmental toxins. SLC22A2 is one of the three similar cation transporters. SLC22A2 contains twelve putative transmembrane domains and is a plasma integral membrane protein. It is found primarily in the kidney, where it may mediate the first step in cation reabsorption. Polyspecific organic cation transporters in the liver, kidney, intestine, and other organs are critical for elimination of many endogenous small organic cations as well as a wide array of drugs and environmental toxins. This gene is one of three similar cation transporter genes located in a cluster on chromosome 6. The encoded protein contains twelve putative transmembrane domains and is a plasma integral membrane protein. It is found primarily in the kidney, where it may mediate the first step in cation reabsorption. Two transcript variants encoding different isoforms have been found for this gene.

Synonyms:

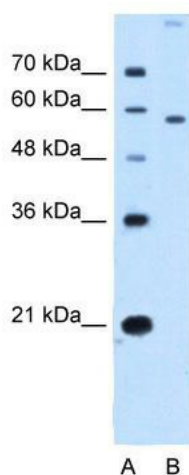
OCT2

Note:

Immunogen sequence homology: Human: 100%; Mouse: 92%; Rat: 85%; Dog: 83%; Pig: 83%; Horse: 83%; Bovine: 83%; Rabbit: 83%; Guinea pig: 83%

Protein Families:

Transmembrane

Product images:


WB Suggested Anti-SLC22A2 Antibody Titration: 2.5 ug/ml; Positive Control: HepG2 cell lysate