

Product datasheet for **TA334038**

SOX11 Rabbit Polyclonal Antibody

Product data:

Product Type:	Primary Antibodies
Applications:	WB
Recommended Dilution:	WB
Reactivity:	Human
Host:	Rabbit
Isotype:	IgG
Clonality:	Polyclonal
Immunogen:	The immunogen for Anti-SOX11 Antibody: synthetic peptide directed towards the middle region of human SOX11. Synthetic peptide located within the following region: PHQQLLQPPGQQPSQLLRRYNVAKVPASPTLSSSAESPEGASLYDEVKAG
Formulation:	Liquid. Purified antibody supplied in 1x PBS buffer with 0.09% (w/v) sodium azide and 2% sucrose. <i>Note that this product is shipped as lyophilized powder to China customers.</i>
Purification:	Affinity Purified
Conjugation:	Unconjugated
Storage:	Store at -20°C as received.
Stability:	Stable for 12 months from date of receipt.
Predicted Protein Size:	47 kDa
Gene Name:	SRY-box 11
Database Link:	NP_003099 Entrez Gene 6664 Human P35716



[View online »](#)

Background:

SOX11 is a member of the SOX (SRY-related HMG-box) family of transcription factors involved in the regulation of embryonic development and in the determination of the cell fate. The protein may act as a transcriptional regulator after forming a protein complex with other proteins. The protein may function in the developing nervous system and play a role in tumorigenesis. This intronless gene encodes a member of the SOX (SRY-related HMG-box) family of transcription factors involved in the regulation of embryonic development and in the determination of the cell fate. The encoded protein may act as a transcriptional regulator after forming a protein complex with other proteins. The protein may function in the developing nervous system and play a role in tumorigenesis. Publication Note: This RefSeq record includes a subset of the publications that are available for this gene. Please see the Entrez Gene record to access additional publications.

Synonyms:

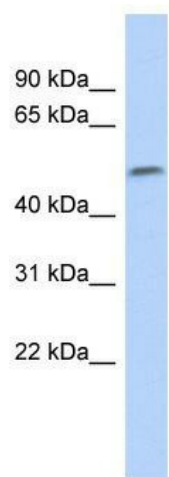
MRD27

Note:

Immunogen sequence homology: Human: 100%; Rabbit: 100%; Pig: 92%; Horse: 92%; Guinea pig: 92%; Rat: 85%; Mouse: 85%

Protein Families:

ES Cell Differentiation/IPS, Induced pluripotent stem cells

Product images:

WB Suggested Anti-SOX11 Antibody Titration: 0.2-1 ug/ml; ELISA Titer: 1:62500; Positive Control: Human Small Intestine