

## Product datasheet for **TA334034**

### SP3 Rabbit Polyclonal Antibody

#### Product data:

Product Type:	Primary Antibodies
Applications:	IHC, WB
Recommended Dilution:	WB, IHC
Reactivity:	Human, Mouse
Host:	Rabbit
Isotype:	IgG
Clonality:	Polyclonal
Immunogen:	The immunogen for Anti-SP3 Antibody: synthetic peptide directed towards the middle region of human SP3. Synthetic peptide located within the following region: TAGINADGHLINTGQAMDSSDNSERTGERVSPDINETNTDLDLVPTSSS
Formulation:	Liquid. Purified antibody supplied in 1x PBS buffer with 0.09% (w/v) sodium azide and 2% sucrose. <i>Note that this product is shipped as lyophilized powder to China customers.</i>
Purification:	Affinity Purified
Conjugation:	Unconjugated
Storage:	Store at -20°C as received.
Stability:	Stable for 12 months from date of receipt.
Predicted Protein Size:	82 kDa
Gene Name:	Sp3 transcription factor
Database Link:	<a href="#">NP_003102</a> <a href="#">Entrez Gene 20687 Mouse</a> <a href="#">Entrez Gene 6670 Human</a> <a href="#">Q02447</a>



[View online »](#)

**Background:**

SP3 is a transcriptional factor that can act as an activator or repressor, probably in a isoform-specific manner. SP3 binds to GT and GC boxes promoters elements. This gene belongs to a family of Sp1 related genes that encode transcription factors that regulate transcription by binding to consensus GC- and GT-box regulatory elements in target genes. This protein contains a zinc finger DNA-binding domain and several transactivation domains, and has been reported to function as a bifunctional transcription factor that either stimulates or represses the transcription of numerous genes. Transcript variants encoding different isoforms have been described for this gene, and one has been reported to initiate translation from a non-AUG (AUA) start codon. Additional isoforms, resulting from the use of alternate downstream translation initiation sites, have also been noted.

**Synonyms:**

SPR2

**Note:**

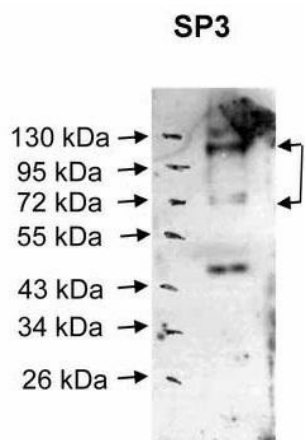
Immunogen sequence homology: Dog: 100%; Pig: 100%; Rat: 100%; Horse: 100%; Human: 100%; Mouse: 100%; Bovine: 100%; Rabbit: 100%; Guinea pig: 100%

**Protein Families:**

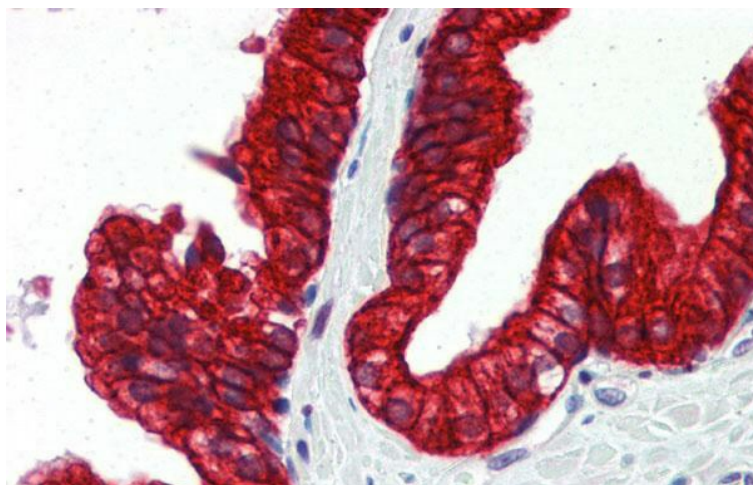
Druggable Genome, Transcription Factors

**Product images:**

WB Suggested Anti-SP3 Antibody Titration: 0.2-1 ug/ml; ELISA Titer: 1:312500; Positive Control: Human Muscle



Sample Type: Human nuclear cell extracts (30 ug); Primary Dilution: 1:1000; Secondary Antibody: anti-Rabbit HRP; Secondary Dilution: 1:20000; Image Submitted By: Katarina Luciakova; Cancer Research Institute See Customer Feedback tab for detailed informat



Immunohistochemistry with Human Prostate lysate tissue at an antibody concentration of 5.0 ug/ml using anti-SP3 antibody