

Product datasheet for **TA334033**

SUPT5H Rabbit Polyclonal Antibody

Product data:

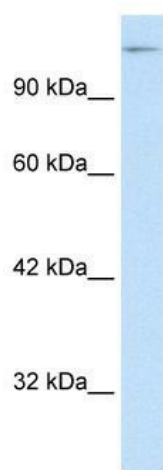
Product Type:	Primary Antibodies
Applications:	IHC, WB
Recommended Dilution:	WB, IHC
Reactivity:	Human
Host:	Rabbit
Isotype:	IgG
Clonality:	Polyclonal
Immunogen:	The immunogen for Anti-SUPT5H Antibody: synthetic peptide directed towards the C terminal of human SUPT5H. Synthetic peptide located within the following region: PYAAPSPQGSYQPSPSPQSYHQVAPSPAGYQNTHSPASYHPTSPMAYQA
Formulation:	Liquid. Purified antibody supplied in 1x PBS buffer with 0.09% (w/v) sodium azide and 2% sucrose.
Purification:	Affinity Purified
Conjugation:	Unconjugated
Storage:	Store at -20°C as received.
Stability:	Stable for 12 months from date of receipt.
Predicted Protein Size:	121 kDa
Gene Name:	SPT5 homolog, DSIF elongation factor subunit
Database Link:	NP_003160 Entrez Gene 6829 Human O00267
Background:	SUPT5H and its binding partner regulate transcriptional elongation by RNA polymerase II. SPT4 and SPT5 are involved in both 5,6-dichloro-1-beta-D-ribofuranosylbenzimidazole (DRB)-mediated transcriptional inhibition and the activation of transcriptional elongation by the human immunodeficiency virus type 1 (HIV-1) Tat protein.
Synonyms:	SPT5; SPT5H; Tat-CT1
Note:	Immunogen sequence homology: Bovine: 100%; Dog: 100%; Guinea pig: 100%; Horse: 100%; Human: 100%; Rabbit: 100%; African clawed frog: 92%; Zebrafish: 92%



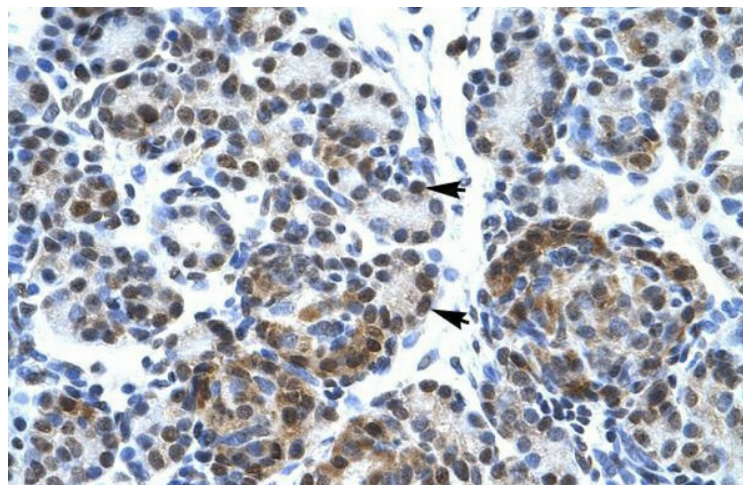
[View online »](#)

Protein Families: Transcription Factors

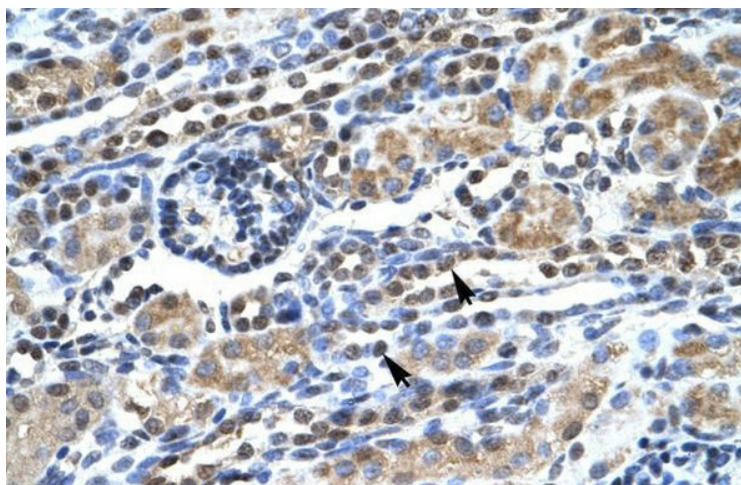
Product images:



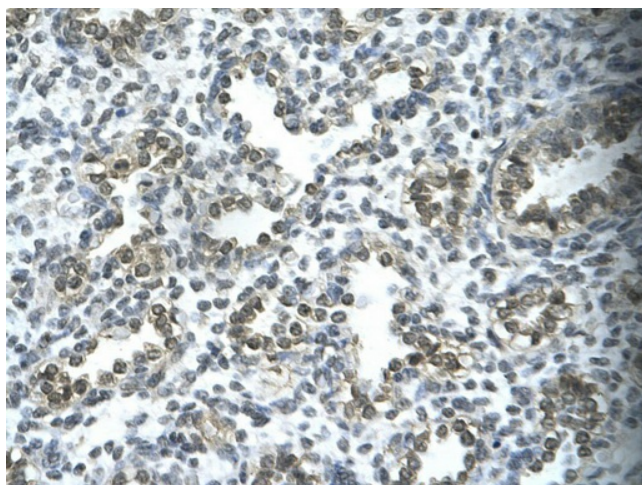
WB Suggested Anti-SUPT5H Antibody Titration:
0.2-1 ug/ml; ELISA Titer: 1:62500; Positive Control:
HepG2 cell lysate



Human Pancreas



Human kidney



Rabbit Anti-SUPT5H Antibody; Paraffin Embedded
Tissue: Human alveolar cell; Cellular Data:
Epithelial cells of renal tubule; Antibody
Concentration: 4.0-8.0 ug/ml; Magnification: 400X