

Product datasheet for **TA334032**

Spt6 (SUPT6H) Rabbit Polyclonal Antibody

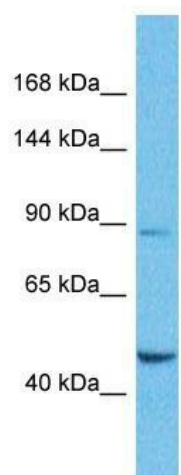
Product data:

Product Type:	Primary Antibodies
Applications:	WB
Recommended Dilution:	WB
Reactivity:	Human
Host:	Rabbit
Isotype:	IgG
Clonality:	Polyclonal
Immunogen:	The immunogen for Anti-SUPT6H Antibody is: synthetic peptide directed towards the N-terminal region of Human SUPT6H. Synthetic peptide located within the following region: FVESEAESEEEYNDGEVVRVTKKFVEEEDDDEEEEEENLDDQDEQGN
Formulation:	Liquid. Purified antibody supplied in 1x PBS buffer with 0.09% (w/v) sodium azide and 2% sucrose. <i>Note that this product is shipped as lyophilized powder to China customers.</i>
Purification:	Affinity Purified
Conjugation:	Unconjugated
Storage:	Store at -20°C as received.
Stability:	Stable for 12 months from date of receipt.
Predicted Protein Size:	79 kDa
Gene Name:	SPT6 homolog, histone chaperone
Database Link:	NP_003161 Entrez Gene 6830 Human Q7KZ85
Background:	SUPT6H acts to stimulate transcriptional elongation by RNA polymerase II.
Synonyms:	emb-5; SPT6; SPT6H
Note:	Immunogen sequence homology: Bovine: 100%; Dog: 100%; Guinea pig: 100%; Horse: 100%; Human: 100%; Mouse: 100%; Pig: 100%; Rabbit: 100%; Rat: 100%; Zebrafish: 90%
Protein Families:	Transcription Factors



[View online »](#)

Product images:



Host: Rabbit; Target Name: SUPT6H; Sample Tissue: Lung Tumor lysates; Antibody Dilution: 1.0 ug/ml