

## Product datasheet for **TA334031**

### T Rabbit Polyclonal Antibody

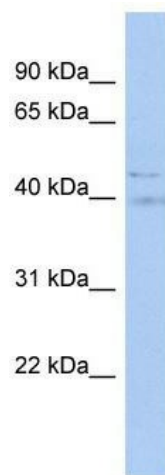
#### Product data:

Product Type:	Primary Antibodies
Applications:	WB
Recommended Dilution:	WB
Reactivity:	Human
Host:	Rabbit
Isotype:	IgG
Clonality:	Polyclonal
Immunogen:	The immunogen for Anti-T Antibody: synthetic peptide directed towards the middle region of human T. Synthetic peptide located within the following region: TSTLCPPANPHPQFGGALSLPSTHSCDRYPTLRSHRSPYPSPYHRNNS
Formulation:	Liquid. Purified antibody supplied in 1x PBS buffer with 0.09% (w/v) sodium azide and 2% sucrose. <i>Note that this product is shipped as lyophilized powder to China customers.</i>
Purification:	Affinity Purified
Conjugation:	Unconjugated
Storage:	Store at -20°C as received.
Stability:	Stable for 12 months from date of receipt.
Predicted Protein Size:	47 kDa
Gene Name:	T brachyury transcription factor
Database Link:	<a href="#">NP_003172</a> <a href="#">Entrez Gene 6862 Human</a> <a href="#">O15178</a>



[View online »](#)

<b>Background:</b>	T protein is involved in the transcriptional regulation of genes required for mesoderm formation and differentiation. It binds to a palindromic site (called T site) and activates gene transcription when bound to such a site. The protein encoded by this gene is an embryonic nuclear transcription factor that binds to a specific DNA element, the palindromic T-site. It binds through a region in its N-terminus, called the T-box, and effects transcription of genes required for mesoderm formation and differentiation. The protein is localized to notochord-derived cells.
<b>Synonyms:</b>	SAVA; TFT
<b>Note:</b>	Immunogen sequence homology: Dog: 100%; Rat: 100%; Horse: 100%; Human: 100%; Rabbit: 100%; Mouse: 93%; Pig: 92%; Guinea pig: 92%; Bovine: 83%; Zebrafish: 82%
<b>Protein Families:</b>	ES Cell Differentiation/IPS, Transcription Factors

**Product images:**

WB Suggested Anti-T Antibody Titration: 0.2-1 ug/ml; ELISA Titer: 1:62500; Positive Control: PANC1 cell lysate