

Product datasheet for **TA334030**

T Rabbit Polyclonal Antibody

Product data:

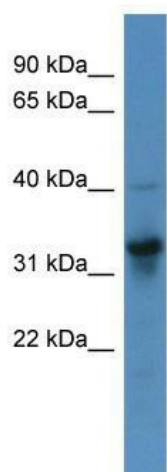
Product Type:	Primary Antibodies
Applications:	WB
Recommended Dilution:	WB
Reactivity:	Human
Host:	Rabbit
Isotype:	IgG
Clonality:	Polyclonal
Immunogen:	The immunogen for Anti-T Antibody: synthetic peptide directed towards the N terminal of human T. Synthetic peptide located within the following region: SSPGTESAGKSLQYRVDHLLSAVENELQAGSEKGDPTERELRVGLEESEL
Formulation:	Liquid. Purified antibody supplied in 1x PBS buffer with 0.09% (w/v) sodium azide and 2% sucrose.
Purification:	Affinity Purified
Conjugation:	Unconjugated
Storage:	Store at -20°C as received.
Stability:	Stable for 12 months from date of receipt.
Predicted Protein Size:	47 kDa
Gene Name:	T brachyury transcription factor
Database Link:	NP_003172 Entrez Gene 6862 Human O15178
Background:	The protein encoded by this gene is an embryonic nuclear transcription factor that binds to a specific DNA element, the palindromic T-site. It binds through a region in its N-terminus, called the T-box, and effects transcription of genes required for mesoderm formation and differentiation. The protein is localized to notochord-derived cells.
Synonyms:	SAVA; TFT
Note:	Immunogen sequence homology: African clawed frog: 100%; Bovine: 100%; Chicken: 100%; Guinea pig: 100%; Human: 100%; Mouse: 100%; Pig: 100%; Rat: 100%; Dog: 92%; Rabbit: 92%



[View online »](#)

Protein Families: ES Cell Differentiation/IPS, Transcription Factors

Product images:



WB Suggested Anti-T Antibody Titration: 0.2-1 ug/ml; ELISA Titer: 1:12500; Positive Control: 293T cell lysate