

## Product datasheet for **TA334024**

### TCF21 Rabbit Polyclonal Antibody

#### Product data:

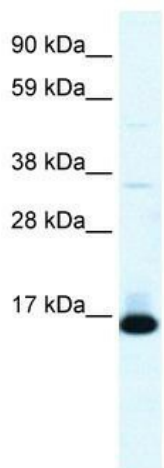
Product Type:	Primary Antibodies
Applications:	IHC, WB
Recommended Dilution:	WB, IHC
Reactivity:	Human
Host:	Rabbit
Isotype:	IgG
Clonality:	Polyclonal
Immunogen:	The immunogen for Anti-TCF21 Antibody: synthetic peptide directed towards the N terminal of human TCF21. Synthetic peptide located within the following region: SNCENGSPQKGRGGLGKRRKAPTkkSPLSGVsqEGKQVQRNAANARERAR
Formulation:	Liquid. Purified antibody supplied in 1x PBS buffer with 0.09% (w/v) sodium azide and 2% sucrose.
Purification:	Affinity Purified
Conjugation:	Unconjugated
Storage:	Store at -20°C as received.
Stability:	Stable for 12 months from date of receipt.
Predicted Protein Size:	20 kDa
Gene Name:	transcription factor 21
Database Link:	<a href="#">NP_003197</a> <a href="#">Entrez Gene 6943 Human</a> <a href="#">O43680</a>
Background:	The TCF21 gene encodes a transcription factor of the basic helix-loop-helix family. The TCF21 product is mesoderm specific, and expressed in embryonic epicardium, mesenchyme-derived tissues of lung, gut, gonad, and both mesenchymal and glomerular epithelial cells in the kidney.
Synonyms:	bHLHa23; POD1
Note:	Immunogen sequence homology: Dog: 100%; Pig: 100%; Rat: 100%; Horse: 100%; Human: 100%; Mouse: 100%; Bovine: 100%; Rabbit: 100%; Guinea pig: 100%



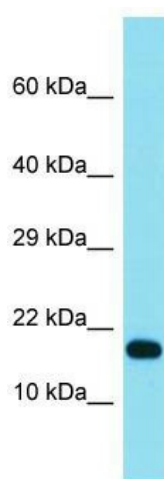
[View online »](#)

Protein Families: Druggable Genome, Transcription Factors

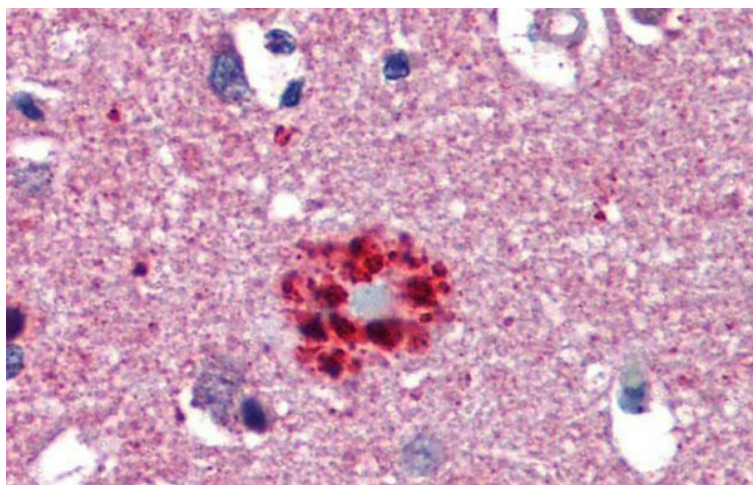
### Product images:



WB Suggested Anti-TCF21 Antibody Titration: 0.2-1 ug/ml; Positive Control: Human Lung



Host: Rabbit; Target Name: TCF21; Sample Tissue: HeLa Whole cell lysates; Antibody Dilution: 1.0 ug/ml



Immunohistochemistry with Human Brain, cortex, senile plaque tissue at an antibody concentration of 5.0 ug/ml using anti-TCF21 antibody