

Product datasheet for **TA334023**

TEAD3 Rabbit Polyclonal Antibody

Product data:

Product Type:	Primary Antibodies
Applications:	WB
Recommended Dilution:	WB
Reactivity:	Human
Host:	Rabbit
Isotype:	IgG
Clonality:	Polyclonal
Immunogen:	The immunogen for Anti-TEAD3 Antibody: synthetic peptide directed towards the middle region of human TEAD3. Synthetic peptide located within the following region: GLKELYEKGPPNAFFLVKFWADLNSTIQEGPGAFYGVSSQYSSADSMITIS
Formulation:	Liquid. Purified antibody supplied in 1x PBS buffer with 0.09% (w/v) sodium azide and 2% sucrose. <i>Note that this product is shipped as lyophilized powder to China customers.</i>
Purification:	Affinity Purified
Conjugation:	Unconjugated
Storage:	Store at -20°C as received.
Stability:	Stable for 12 months from date of receipt.
Predicted Protein Size:	49 kDa
Gene Name:	TEA domain transcription factor 3
Database Link:	NP_003205 Entrez Gene 7005 Human Q99594



[View online »](#)

Background:

TEAD3 is a member of the transcriptional enhancer factor (TEF) family. The family members contain the TEA/ATTS DNA-binding domain. This member is preferentially expressed in placenta and transactivates the chorionic somatomammotropin gene enhancer. This gene encodes a member of the transcriptional enhancer factor (TEF) family. The family members contain the TEA/ATTS DNA-binding domain. This member is preferentially expressed in placenta and transactivates the chorionic somatomammotropin gene enhancer. The protein is encoded through the use of a non-AUG (ATA) translation initiation codon.

Synonyms:

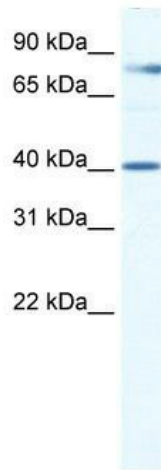
DTEF-1; ETEFR-1; TEAD-3; TEAD5; TEF-5; TEF5

Note:

Immunogen sequence homology: Dog: 100%; Pig: 100%; Rat: 100%; Horse: 100%; Human: 100%; Mouse: 100%; Bovine: 100%; Rabbit: 100%; Guinea pig: 93%; Zebrafish: 77%

Protein Families:

Transcription Factors

Product images:

WB Suggested Anti-TEAD3 Antibody Titration: 0.2-1 ug/ml; Positive Control: Human Placenta