

## Product datasheet for **TA334021**

### AP2 beta (TFAP2B) Rabbit Polyclonal Antibody

#### Product data:

Product Type:	Primary Antibodies
Applications:	WB
Recommended Dilution:	WB
Reactivity:	Human
Host:	Rabbit
Isotype:	IgG
Clonality:	Polyclonal
Immunogen:	The immunogen for Anti-TFAP2B Antibody: synthetic peptide directed towards the C terminal of human TFAP2B. Synthetic peptide located within the following region: AQDRTPIGNSRPSPILEPGIQSCLTHFSLITHGFGAPAICAALTALQNYL
Formulation:	Liquid. Purified antibody supplied in 1x PBS buffer with 0.09% (w/v) sodium azide and 2% sucrose. <i>Note that this product is shipped as lyophilized powder to China customers.</i>
Purification:	Affinity Purified
Conjugation:	Unconjugated
Storage:	Store at -20°C as received.
Stability:	Stable for 12 months from date of receipt.
Predicted Protein Size:	49 kDa
Gene Name:	transcription factor AP-2 beta
Database Link:	<a href="#">NP_003212</a> <a href="#">Entrez Gene 7021 Human</a> <a href="#">Q92481</a>
Background:	TFAP2B belongs to the AP-2 family which is developmentally regulated and have distinct overlapping functions in the regulation of many genes governing growth and differentiation. TFAP2B binds DNA as a dimer and can form homodimers or heterodimers with other AP-2 family members. It may be a candidate for conferring susceptibility to type 2 diabetes.
Synonyms:	AP-2B; AP2-B

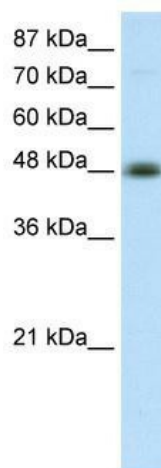


[View online »](#)

**Note:** Immunogen sequence homology: Dog: 100%; Pig: 100%; Rat: 100%; Horse: 100%; Human: 100%; Mouse: 100%; Bovine: 100%; Rabbit: 100%; Guinea pig: 100%; Zebrafish: 93%; Sheep: 79%

**Protein Families:** Druggable Genome, Transcription Factors

**Product images:**



WB Suggested Anti-TFAP2B Antibody; Titration: 2.5 ug/ml; Positive Control: Transfected 293T