

Product datasheet for TA334016

NR2E1 Rabbit Polyclonal Antibody

Product data:

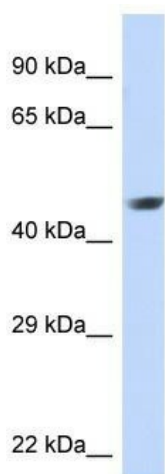
Product Type:	Primary Antibodies
Applications:	WB
Recommended Dilution:	WB
Reactivity:	Human
Host:	Rabbit
Isotype:	IgG
Clonality:	Polyclonal
Immunogen:	The immunogen for Anti-NR2E1 Antibody: synthetic peptide directed towards the N terminal of human NR2E1. Synthetic peptide located within the following region: RTSTIRKQVALYFRGHKEENGAAAHFPSAALPAPAFFTAVTQLEPHGLEL
Formulation:	Liquid. Purified antibody supplied in 1x PBS buffer with 0.09% (w/v) sodium azide and 2% sucrose. <i>Note that this product is shipped as lyophilized powder to China customers.</i>
Purification:	Affinity Purified
Conjugation:	Unconjugated
Storage:	Store at -20°C as received.
Stability:	Stable for 12 months from date of receipt.
Predicted Protein Size:	42 kDa
Gene Name:	nuclear receptor subfamily 2 group E member 1
Database Link:	NP_003260 Entrez Gene 7101 Human Q9Y466
Background:	The NR2E1 gene is a member of the steroid nuclear receptor superfamily and is predominately expressed in the brain. The contributions of this gene to human B-cell leukemia and to brain development are unknown at present.
Synonyms:	TLL; TLX; XTLL
Note:	Immunogen sequence homology: Dog: 100%; Pig: 100%; Horse: 100%; Human: 100%; Bovine: 100%; Rabbit: 100%; Rat: 93%; Mouse: 93%; Zebrafish: 93%; Guinea pig: 93%



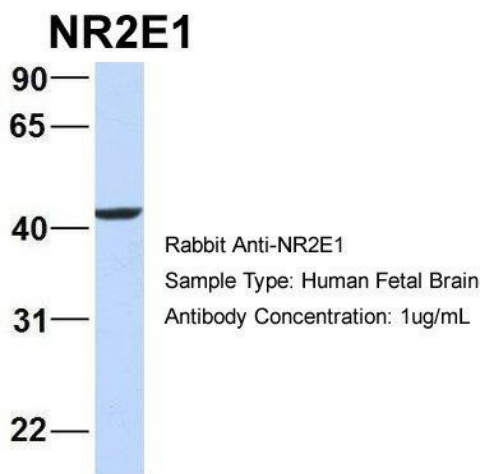
[View online »](#)

Protein Families: Druggable Genome, Nuclear Hormone Receptor, Transcription Factors

Product images:



WB Suggested Anti-NR2E1 Antibody Titration: 0.03 ug/ml; Positive Control: Jurkat cell lysate



Host: Rabbit; Target Name: NR2E1; Sample Tissue: Human Fetal Brain; Antibody Dilution: 1.0 ug/ml