

Product datasheet for **TA334015**

TUB Rabbit Polyclonal Antibody

Product data:

Product Type:	Primary Antibodies
Applications:	IHC, WB
Recommended Dilution:	WB, IHC
Reactivity:	Human
Host:	Rabbit
Isotype:	IgG
Clonality:	Polyclonal
Immunogen:	The immunogen for Anti-TUB Antibody: synthetic peptide directed towards the N terminal of human TUB. Synthetic peptide located within the following region: DSLASVQLGATRPTAPASAKRTKAAATAGGQGGGAARKEKKGKHKGTS GPA
Formulation:	Liquid. Purified antibody supplied in 1x PBS buffer with 0.09% (w/v) sodium azide and 2% sucrose. <i>Note that this product is shipped as lyophilized powder to China customers.</i>
Purification:	Affinity Purified
Conjugation:	Unconjugated
Storage:	Store at -20°C as received.
Stability:	Stable for 12 months from date of receipt.
Predicted Protein Size:	62 kDa
Gene Name:	tubby bipartite transcription factor
Database Link:	NP_003311 Entrez Gene 7275 Human P50607



[View online »](#)

Background:

TUB functions in signal transduction from heterotrimeric G protein-coupled receptors. It could be involved in the hypothalamic regulation of body weight. This gene encodes a member of the Tubby family of bipartite transcription factors. The encoded protein may play a role in obesity and sensorineural degradation. The crystal structure has been determined for a similar protein in mouse, and it functions as a membrane-bound transcription regulator that translocates to the nucleus in response to phosphoinositide hydrolysis. Two transcript variants encoding distinct isoforms have been identified for this gene.

Synonyms:

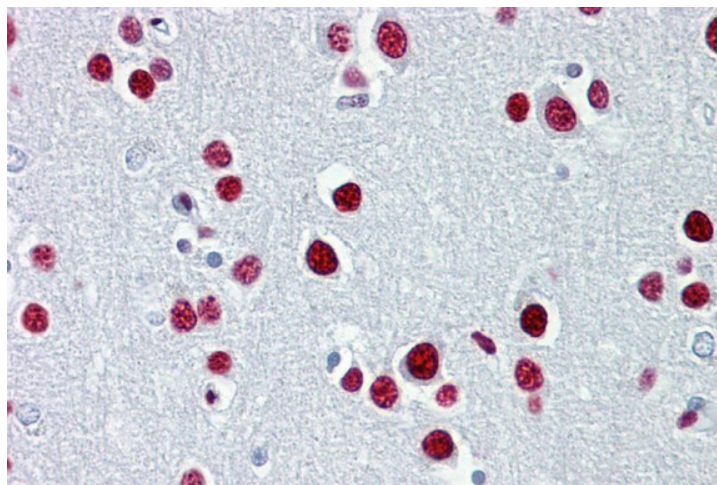
rd5; RDOB

Note:

Immunogen sequence homology: Human: 100%; Dog: 92%; Rat: 92%; Mouse: 92%; Rabbit: 92%; Pig: 85%; Horse: 85%; Guinea pig: 85%

Product images:

WB Suggested Anti-TUB Antibody Titration: 0.2-1 ug/ml; ELISA Titer: 1:12500; Positive Control: Human Lung



Brain, cortex