

Product datasheet for **TA334013**

TULP2 Rabbit Polyclonal Antibody

Product data:

| | |
|-------------------------|---|
| Product Type: | Primary Antibodies |
| Applications: | WB |
| Recommended Dilution: | WB |
| Reactivity: | Human |
| Host: | Rabbit |
| Isotype: | IgG |
| Clonality: | Polyclonal |
| Immunogen: | The immunogen for Anti-TULP2 Antibody: synthetic peptide directed towards the middle region of human TULP2. Synthetic peptide located within the following region: RKRRRSKTSNYLISLDPTLLSRDGNFVGKVRSNVFSTKFTIFDNGVNP |
| Formulation: | Liquid. Purified antibody supplied in 1x PBS buffer with 0.09% (w/v) sodium azide and 2% sucrose. |
| Purification: | Affinity Purified |
| Conjugation: | Unconjugated |
| Storage: | Store at -20°C as received. |
| Stability: | Stable for 12 months from date of receipt. |
| Predicted Protein Size: | 59 kDa |
| Gene Name: | tubby like protein 2 |
| Database Link: | NP_003314 Entrez Gene 7288 Human O00295 |
| Background: | TULP2 is a member of a family of tubby-like genes (TULPs) that encode proteins of unknown function. Members of this family have been identified in plants, vertebrates, and invertebrates. The TULP proteins share a conserved C-terminal region of approximately 200 amino acid residues. TULP2 is a member of a family of tubby-like genes (TULPs) that encode proteins of unknown function. Members of this family have been identified in plants, vertebrates, and invertebrates. The TULP proteins share a conserved C-terminal region of approximately 200 amino acid residues. |

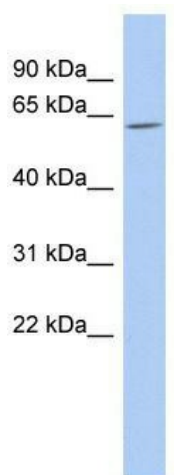


[View online »](#)

Synonyms: CT65; TUBL2

Note: Immunogen sequence homology: Human: 100%; Horse: 93%; Rat: 86%; Mouse: 86%; Bovine: 86%; Dog: 80%; Pig: 79%; Rabbit: 79%; Guinea pig: 79%

Product images:



WB Suggested Anti-TULP2 Antibody Titration: 0.2-1 ug/ml; ELISA Titer: 1:12500; Positive Control: Human Thymus