

Product datasheet for **TA334012**

TULP3 Rabbit Polyclonal Antibody

Product data:

Product Type:	Primary Antibodies
Applications:	WB
Recommended Dilution:	WB
Reactivity:	Human
Host:	Rabbit
Isotype:	IgG
Clonality:	Polyclonal
Immunogen:	The immunogen for Anti-TULP3 Antibody: synthetic peptide directed towards the middle region of human TULP3. Synthetic peptide located within the following region: GLFPTYMYLEKEENQKIFLLAARKRKSKTANYLISIDPVDSREGESY
Formulation:	Liquid. Purified antibody supplied in 1x PBS buffer with 0.09% (w/v) sodium azide and 2% sucrose. <i>Note that this product is shipped as lyophilized powder to China customers.</i>
Purification:	Affinity Purified
Conjugation:	Unconjugated
Storage:	Store at -20°C as received.
Stability:	Stable for 12 months from date of receipt.
Predicted Protein Size:	50 kDa
Gene Name:	tubby like protein 3
Database Link:	NP_003315 Entrez Gene 7289 Human O75386



[View online »](#)

Background:

TULP3 is a member of the tubby-like protein (TULP) family. Members of this family have been identified in plants, vertebrates, and invertebrates, and they share a conserved C-terminal region of approximately 200 amino acid residues. The human and mouse TULP3 proteins share 69% amino acid sequence identity, with higher identity at the N and C termini than in the central region. This gene encodes a member of the tubby-like protein (TULP) family. Members of this family have been identified in plants, vertebrates, and invertebrates, and they share a conserved C-terminal region of approximately 200 amino acid residues. The human and mouse TULP3 proteins share 69% amino acid sequence identity, with higher identity at the N and C termini than in the central region.

Synonyms:

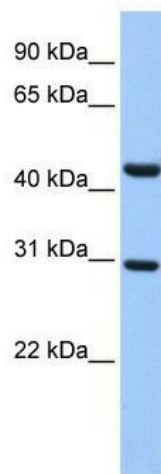
TUBL3

Note:

Immunogen sequence homology: Human: 100%; Mouse: 85%; Rabbit: 85%; Dog: 77%; Horse: 77%; Bovine: 77%

Protein Families:

Druggable Genome, Transcription Factors

Product images:

WB Suggested Anti-TULP3 Antibody Titration: 0.2-1 ug/ml; ELISA Titer: 1:2500; Positive Control: Human Muscle