

Product datasheet for **TA334007**

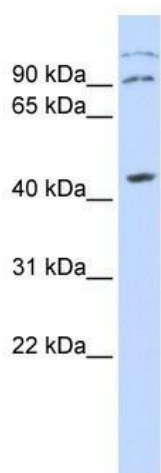
ZFX Rabbit Polyclonal Antibody

Product data:

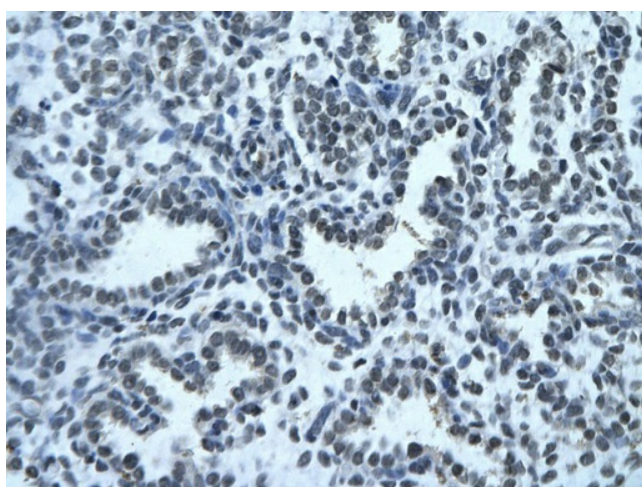
Product Type:	Primary Antibodies
Applications:	IHC, WB
Recommended Dilution:	WB, IHC
Reactivity:	Human
Host:	Rabbit
Isotype:	IgG
Clonality:	Polyclonal
Immunogen:	The immunogen for Anti-ZFX Antibody: synthetic peptide directed towards the middle region of human ZFX. Synthetic peptide located within the following region: KVYIFKADPGEDDLGGTVDIVSEPENDHGVLLDQNSSIRVPREKMVYM
Formulation:	Liquid. Purified antibody supplied in 1x PBS buffer with 0.09% (w/v) sodium azide and 2% sucrose. <i>Note that this product is shipped as lyophilized powder to China customers.</i>
Purification:	Affinity Purified
Conjugation:	Unconjugated
Storage:	Store at -20°C as received.
Stability:	Stable for 12 months from date of receipt.
Predicted Protein Size:	90 kDa
Gene Name:	zinc finger protein, X-linked
Database Link:	NP_003401 Entrez Gene 7543 Human P17010
Background:	ZFX is a probable transcriptional activator.
Synonyms:	ZNF926
Note:	Immunogen sequence homology: Dog: 100%; Pig: 100%; Rat: 100%; Horse: 100%; Human: 100%; Mouse: 100%; Bovine: 100%; Rabbit: 100%; Zebrafish: 100%; Guinea pig: 100%
Protein Families:	Transcription Factors



[View online »](#)

Product images:

WB Suggested Anti-ZFX Antibody Titration: 0.2-1 ug/ml; ELISA Titer: 1:312500; Positive Control: 293T cell lysate. ZFX is supported by BioGPS gene expression data to be expressed in HEK293T



Rabbit Anti-ZFX Antibody; Paraffin Embedded Tissue: Human alveolar cell; Cellular Data: Epithelial cells of renal tubule; Antibody Concentration: 4.0-8.0 ug/ml; Magnification: 400X