

Product datasheet for **TA334005**

ZIC3 Rabbit Polyclonal Antibody

Product data:

Product Type:	Primary Antibodies
Applications:	WB
Recommended Dilution:	WB
Reactivity:	Human, Mouse
Host:	Rabbit
Isotype:	IgG
Clonality:	Polyclonal
Immunogen:	The immunogen for Anti-ZIC3 Antibody: synthetic peptide directed towards the N terminal of human ZIC3. Synthetic peptide located within the following region: HHHHHTSQVPSYGGAASAAFNSTREFLFRQRSSGLSEAASGGGQHGLFAG
Formulation:	Liquid. Purified antibody supplied in 1x PBS buffer with 0.09% (w/v) sodium azide and 2% sucrose. <i>Note that this product is shipped as lyophilized powder to China customers.</i>
Purification:	Affinity Purified
Conjugation:	Unconjugated
Storage:	Store at -20°C as received.
Stability:	Stable for 12 months from date of receipt.
Predicted Protein Size:	50 kDa
Gene Name:	Zic family member 3
Database Link:	NP_003404 Entrez Gene 22773 Mouse Entrez Gene 7547 Human O60481
Background:	This gene encodes a member of the ZIC family of C2H2-type zinc finger proteins. This nuclear protein probably functions as a transcription factor in early stages of left-right body axis formation. Mutations in this gene cause X-linked visceral heterotaxy, which includes congenital heart disease and left-right axis defects in organs.
Synonyms:	HTX; HTX1; VACTERLX; ZNF203

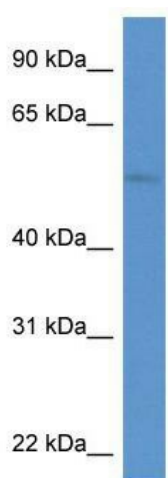


[View online »](#)

Note: Immunogen sequence homology: Dog: 100%; Pig: 100%; Rat: 100%; Horse: 100%; Human: 100%; Mouse: 100%; Bovine: 100%; Rabbit: 100%

Protein Families: Druggable Genome, Embryonic stem cells, ES Cell Differentiation/IPS

Product images:



WB Suggested Anti-ZIC3 Antibody Titration: 0.2-1 ug/ml; ELISA Titer: 1:12500; Positive Control: ACHN cell lysate