

Product datasheet for **TA334002**

ZNF76 Rabbit Polyclonal Antibody

Product data:

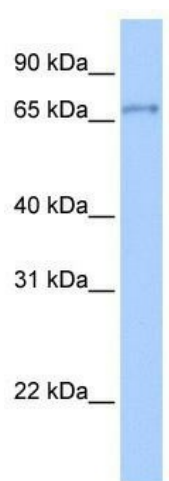
Product Type:	Primary Antibodies
Applications:	WB
Recommended Dilution:	WB
Reactivity:	Human
Host:	Rabbit
Isotype:	IgG
Clonality:	Polyclonal
Immunogen:	The immunogen for Anti-ZNF76 Antibody: synthetic peptide directed towards the middle region of human ZNF76. Synthetic peptide located within the following region: MHKRSAHGELEATEESEQALYEQQLEAASAAEESPPPKRPRIAYLSEVK
Formulation:	Liquid. Purified antibody supplied in 1x PBS buffer with 0.09% (w/v) sodium azide and 2% sucrose. <i>Note that this product is shipped as lyophilized powder to China customers.</i>
Purification:	Affinity Purified
Conjugation:	Unconjugated
Storage:	Store at -20°C as received.
Stability:	Stable for 12 months from date of receipt.
Predicted Protein Size:	62 kDa
Gene Name:	zinc finger protein 76
Database Link:	NP_003418 Entrez Gene 7629 Human P36508
Background:	ZNF76 belongs to the krueppel C2H2-type zinc-finger protein family. It contains 7 C2H2-type zinc fingers. ZNF76 may be involved in transcriptional regulation.
Synonyms:	D6S229E; Zfp523; ZNF523
Note:	Immunogen sequence homology: Dog: 100%; Pig: 100%; Rat: 100%; Horse: 100%; Human: 100%; Mouse: 100%; Bovine: 100%; Rabbit: 100%; Guinea pig: 100%



[View online »](#)

Protein Families: Transcription Factors

Product images:



WB Suggested Anti-ZNF76 Antibody Titration: 0.2-1 ug/ml; Positive Control: Transfected 293T