

Product datasheet for **TA334001**

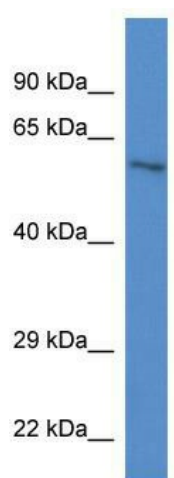
ZKSCAN1 Rabbit Polyclonal Antibody

Product data:

Product Type:	Primary Antibodies
Applications:	WB
Recommended Dilution:	WB
Reactivity:	Mouse
Host:	Rabbit
Isotype:	IgG
Clonality:	Polyclonal
Immunogen:	The immunogen for Anti-Zkscan1 Antibody: synthetic peptide corresponding to a region of Mouse. Synthetic peptide located within the following region: YECNECGKAFSQSSDLTKHQRIHTGEKPYECSECGKAFNRNSYLILHRR
Formulation:	Liquid. Purified antibody supplied in 1x PBS buffer with 0.09% (w/v) sodium azide and 2% sucrose. <i>Note that this product is shipped as lyophilized powder to China customers.</i>
Purification:	Affinity Purified
Conjugation:	Unconjugated
Storage:	Store at -20°C as received.
Stability:	Stable for 12 months from date of receipt.
Predicted Protein Size:	55 kDa
Gene Name:	zinc finger with KRAB and SCAN domains 1
Database Link:	NP_003430 Entrez Gene 74570 Mouse P17029
Background:	Zkscan1 may be involved in transcriptional regulation.
Synonyms:	9130423L19Rik; KOX18; PHZ-37; ZNF36; ZNF139; ZSCAN33
Note:	Immunogen sequence homology: Dog: 100%; Pig: 100%; Rat: 100%; Horse: 100%; Human: 100%; Mouse: 100%; Bovine: 100%; Rabbit: 100%; Guinea pig: 100%; Zebrafish: 86%
Protein Families:	Transcription Factors



[View online »](#)

Product images:

WB Suggested Anti-Zkscan1 Antibody; Titration:
1.0 ug/ml; Positive Control: Mouse Heart