

Product datasheet for **TA333995**

SLC30A3 Rabbit Polyclonal Antibody

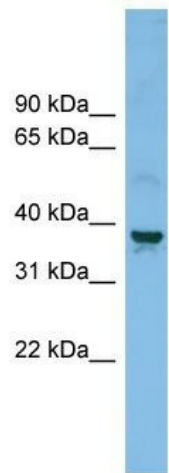
Product data:

Product Type:	Primary Antibodies
Applications:	WB
Recommended Dilution:	WB
Reactivity:	Human
Host:	Rabbit
Isotype:	IgG
Clonality:	Polyclonal
Immunogen:	The immunogen for Anti-SLC30A3 Antibody: synthetic peptide directed towards the middle region of human SLC30A3. Synthetic peptide located within the following region: AMLLTASIAVCANLLMAFVLHQAGPPHSHGSRGAEYAPLEEGPEEPLPLG
Formulation:	Liquid. Purified antibody supplied in 1x PBS buffer with 0.09% (w/v) sodium azide and 2% sucrose. <i>Note that this product is shipped as lyophilized powder to China customers.</i>
Purification:	Affinity Purified
Conjugation:	Unconjugated
Storage:	Store at -20°C as received.
Stability:	Stable for 12 months from date of receipt.
Predicted Protein Size:	42 kDa
Gene Name:	solute carrier family 30 member 3
Database Link:	NP_003450 Entrez Gene 7781 Human Q99726
Background:	SLC30A3 is involved in accumulation of zinc in synaptic vesicles.
Synonyms:	ZNT3
Note:	Immunogen sequence homology: Pig: 100%; Rat: 100%; Human: 100%; Mouse: 100%; Guinea pig: 100%; Dog: 93%; Horse: 93%; Bovine: 86%
Protein Families:	Secreted Protein, Transmembrane



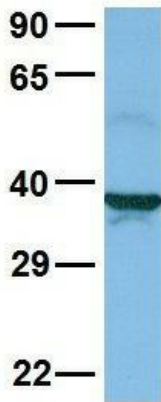
[View online »](#)

Product images:



WB Suggested Anti-SLC30A3 Antibody Titration: 0.2-1 ug/ml; ELISA Titer: 1:62500; Positive Control: Jurkat cell lysate; SLC30A3 is supported by BioGPS gene expression data to be expressed in Jurkat

SLC30A3



Rabbit Anti-SLC30A3
 Sample Type: Human Jurkat
 Antibody Concentration: 1ug/mL

Host: Rabbit; Target Name: SLC30A3; Sample Tissue: Jurkat; Antibody Dilution: 1.0 ug/ml; SLC30A3 is supported by BioGPS gene expression data to be expressed in Jurkat