

Product datasheet for **TA333992**

LAT3 (SLC43A1) Rabbit Polyclonal Antibody

Product data:

Product Type:	Primary Antibodies
Applications:	WB
Recommended Dilution:	WB
Reactivity:	Human
Host:	Rabbit
Isotype:	IgG
Clonality:	Polyclonal
Immunogen:	The immunogen for Anti-SLC43A1 Antibody: synthetic peptide directed towards the middle region of human SLC43A1. Synthetic peptide located within the following region: AVNKMLEYLVTGGQEHEHETNEQQQKVAETVGFYSSVFGAMQLLCLLTCPLI
Formulation:	Liquid. Purified antibody supplied in 1x PBS buffer with 0.09% (w/v) sodium azide and 2% sucrose. <i>Note that this product is shipped as lyophilized powder to China customers.</i>
Purification:	Affinity Purified
Conjugation:	Unconjugated
Storage:	Store at -20°C as received.
Stability:	Stable for 12 months from date of receipt.
Predicted Protein Size:	61 kDa
Gene Name:	solute carrier family 43 member 1
Database Link:	NP_003618 Entrez Gene 8501 Human O75387
Background:	SLC43A1 belongs to the system L family of plasma membrane carrier proteins that transports large neutral amino acids.SLC43A1 belongs to the system L family of plasma membrane carrier proteins that transports large neutral amino acids (Babu et al., 2003 [PubMed 12930836]). [supplied by OMIM]
Synonyms:	LAT3; PB39; POV1; R00504
Note:	Immunogen sequence homology: Human: 100%; Rat: 79%; Mouse: 79%



[View online »](#)

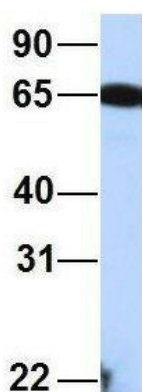
Protein Families: Transmembrane

Product images:



WB Suggested Anti-SLC43A1 Antibody Titration:
0.2-1 ug/ml; ELISA Titer: 1:312500; Positive
Control: Human Placenta

SLC43A1



Rabbit Anti-SLC43A1
Sample Type: Human Fetal Liver
Antibody Concentration: 1ug/mL

2Hum. Fetal Liver; Host: Rabbit; Target Name:
FAM46C; Sample Tissue: Human Fetal Liver;
Antibody Dilution: 1.0 ug/ml