

Product datasheet for **TA333991**

PI 3 Kinase p55 gamma (PIK3R3) Rabbit Polyclonal Antibody

Product data:

Product Type:	Primary Antibodies
Applications:	WB
Recommended Dilution:	WB
Reactivity:	Human
Host:	Rabbit
Isotype:	IgG
Clonality:	Polyclonal
Immunogen:	The immunogen for Anti-PIK3R3 Antibody: synthetic peptide directed towards the middle region of human PIK3R3. Synthetic peptide located within the following region: EYTRTSQEIQMKRTAIEAFNETIKIFEEQCHTQEQHSKEYIERFRREGNE
Formulation:	Liquid. Purified antibody supplied in 1x PBS buffer with 0.09% (w/v) sodium azide and 2% sucrose. <i>Note that this product is shipped as lyophilized powder to China customers.</i>
Purification:	Affinity Purified
Conjugation:	Unconjugated
Storage:	Store at -20°C as received.
Stability:	Stable for 12 months from date of receipt.
Predicted Protein Size:	54 kDa
Gene Name:	phosphoinositide-3-kinase regulatory subunit 3
Database Link:	NP_003620 Entrez Gene 8503 Human Q92569
Background:	PIK3R3 binds to activated (phosphorylated) protein-tyrosine kinases through its SH2 domain and regulates their kinase activity. During insulin stimulation, it also binds to IRS-1.
Synonyms:	p55; p55-GAMMA; p55PIK
Note:	Immunogen sequence homology: Dog: 100%; Pig: 100%; Rat: 100%; Horse: 100%; Human: 100%; Mouse: 100%; Bovine: 100%; Rabbit: 100%; Zebrafish: 100%; Guinea pig: 100%

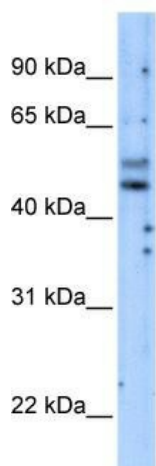


[View online »](#)

Protein Families: Druggable Genome

Protein Pathways: Acute myeloid leukemia, Apoptosis, B cell receptor signaling pathway, Chemokine signaling pathway, Chronic myeloid leukemia, Colorectal cancer, Endometrial cancer, ErbB signaling pathway, Fc epsilon RI signaling pathway, Fc gamma R-mediated phagocytosis, Focal adhesion, Glioma, Insulin signaling pathway, Jak-STAT signaling pathway, Leukocyte transendothelial migration, Melanoma, mTOR signaling pathway, Natural killer cell mediated cytotoxicity, Neurotrophin signaling pathway, Non-small cell lung cancer, Pancreatic cancer, Pathways in cancer, Phosphatidylinositol signaling system, Progesterone-mediated oocyte maturation, Prostate cancer, Regulation of actin cytoskeleton, Renal cell carcinoma, Small cell lung cancer, T cell receptor signaling pathway, Toll-like receptor signaling pathway, Type II diabetes mellitus, VEGF signaling pathway

Product images:



WB Suggested Anti-PIK3R3 Antibody Titration: 5.0 ug/ml; Positive Control: Transfected 293T