

Product datasheet for **TA333988**

SLC25A12 Rabbit Polyclonal Antibody

Product data:

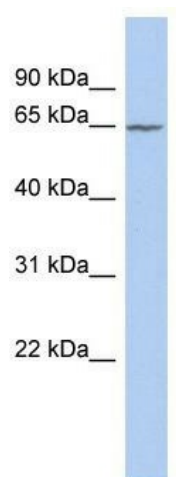
Product Type:	Primary Antibodies
Applications:	WB
Recommended Dilution:	WB
Reactivity:	Human
Host:	Rabbit
Isotype:	IgG
Clonality:	Polyclonal
Immunogen:	The immunogen for Anti-SLC25A12 Antibody: synthetic peptide directed towards the middle region of human SLC25A12. Synthetic peptide located within the following region: GLKPAGSEPTPKSRIADLPPANPDHIGGYRLATATFAGIENKFGLYLPKF
Formulation:	Liquid. Purified antibody supplied in 1x PBS buffer with 0.09% (w/v) sodium azide and 2% sucrose. <i>Note that this product is shipped as lyophilized powder to China customers.</i>
Purification:	Affinity Purified
Conjugation:	Unconjugated
Storage:	Store at -20°C as received.
Stability:	Stable for 12 months from date of receipt.
Predicted Protein Size:	75 kDa
Gene Name:	solute carrier family 25 member 12
Database Link:	NP_003696 Entrez Gene 8604 Human O75746
Background:	SLC25A12 is a calcium-dependent mitochondrial aspartate and glutamate carrier. SLC25A12 may have a function in the urea cycle.
Synonyms:	AGC1; ARALAR
Note:	Immunogen sequence homology: Dog: 100%; Pig: 100%; Rat: 100%; Human: 100%; Mouse: 100%; Bovine: 100%; Rabbit: 100%; Horse: 93%; Guinea pig: 93%



[View online »](#)

Protein Families: Druggable Genome

Product images:



WB Suggested Anti-SLC25A12 Antibody Titration:
0.2-1 ug/ml; ELISA Titer: 1:312500; Positive
Control: COLO205 cell lysate; SLC25A12 is
supported by BioGPS gene expression data to be
expressed in COLO205