

Product datasheet for **TA333987**

SUCLG2 Rabbit Polyclonal Antibody

Product data:

Product Type:	Primary Antibodies
Applications:	WB
Recommended Dilution:	WB
Reactivity:	Human
Host:	Rabbit
Isotype:	IgG
Clonality:	Polyclonal
Immunogen:	The immunogen for Anti-SUCLG2 Antibody is: synthetic peptide directed towards the C-terminal region of Human SUCLG2. Synthetic peptide located within the following region: AKINFDDNAEFRQKDIFAMDDKSENEPIENEAAKYDLKYIGLDGNIACFV
Formulation:	Liquid. Purified antibody supplied in 1x PBS buffer with 0.09% (w/v) sodium azide and 2% sucrose. <i>Note that this product is shipped as lyophilized powder to China customers.</i>
Purification:	Affinity Purified
Conjugation:	Unconjugated
Storage:	Store at -20°C as received.
Stability:	Stable for 12 months from date of receipt.
Predicted Protein Size:	48 kDa
Gene Name:	succinate-CoA ligase GDP-forming beta subunit
Database Link:	NP_003839 Entrez Gene 8801 Human Q96I99
Background:	This gene encodes a GTP-specific beta subunit of succinyl-CoA synthetase. Succinyl-CoA synthetase catalyzes the reversible reaction involving the formation of succinyl-CoA and succinate. Alternate splicing results in multiple transcript variants. Pseudogenes of this gene are found on chromosomes 5 and 12.
Synonyms:	GBETA

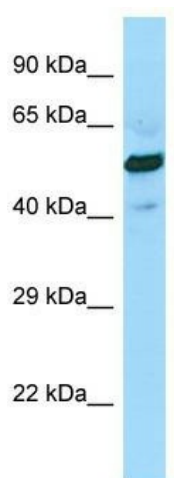


[View online »](#)

Note: Immunogen sequence homology: Dog: 100%; Pig: 100%; Rat: 100%; Horse: 100%; Human: 100%; Mouse: 100%; Bovine: 100%; Rabbit: 100%; Guinea pig: 100%

Protein Pathways: Citrate cycle (TCA cycle), Metabolic pathways, Propanoate metabolism

Product images:



WB Suggested Anti-SUCLG2 Antibody; Titration: 1.0 ug/ml; Positive Control: Fetal Heart