

Product datasheet for **TA333985**

SLC7A7 Rabbit Polyclonal Antibody

Product data:

Product Type:	Primary Antibodies
Applications:	WB
Recommended Dilution:	WB
Reactivity:	Human
Host:	Rabbit
Isotype:	IgG
Clonality:	Polyclonal
Immunogen:	The immunogen for Anti-SLC7A7 Antibody: synthetic peptide directed towards the middle region of human SLC7A7. Synthetic peptide located within the following region: WGTLVQDIFTYAKVLALIAVIVAGIVRLGQGASTHFENSFEGSSFAVGDI
Formulation:	Liquid. Purified antibody supplied in 1x PBS buffer with 0.09% (w/v) sodium azide and 2% sucrose.
Purification:	Affinity Purified
Conjugation:	Unconjugated
Storage:	Store at -20°C as received.
Stability:	Stable for 12 months from date of receipt.
Predicted Protein Size:	56 kDa
Gene Name:	solute carrier family 7 member 7
Database Link:	NP_003973 Entrez Gene 9056 Human Q9UM01
Background:	The protein encoded by this gene is the light subunit of a cationic amino acid transporter. This sodium-independent transporter is formed when the light subunit encoded by this gene dimerizes with the heavy subunit transporter protein SLC3A2. This transporter is found in epithelial cell membranes where it transfers cationic and large neutral amino acids from the cell to the extracellular space. Defects in this gene are a cause of lysinuric protein intolerance (LPI). Several transcript variants encoding the same protein have been found for this gene.
Synonyms:	LAT3; LPI; MOP-2; y+LAT-1; Y+LAT1

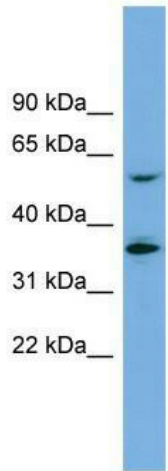


[View online »](#)

Note: Immunogen sequence homology: Horse: 100%; Human: 100%; Bovine: 100%; Rabbit: 100%; Pig: 93%; Dog: 86%; Rat: 79%; Mouse: 79%; Guinea pig: 79%

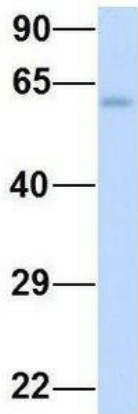
Protein Families: Druggable Genome, Transmembrane

Product images:



WB Suggested Anti-SLC7A7 Antibody Titration: 0.2-1 ug/ml; Positive Control: PANC1 cell lysate

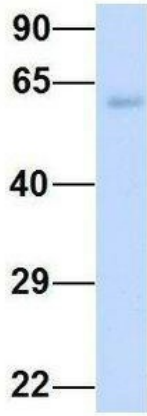
SLC7A7



Rabbit Anti-SLC7A7
 Sample Type: Human Fetal Heart
 Antibody Concentration: 1ug/mL

Host: Rabbit; Target Name: SLC7A7; Sample Tissue: Human Fetal Heart; Antibody Dilution: 1.0 ug/ml

SLC7A7



Rabbit Anti-SLC7A7
Sample Type: Human Fetal Lung
Antibody Concentration: 1ug/mL

Host: Rabbit; Target Name: SLC7A7; Sample
Tissue: Human Fetal Lung; Antibody Dilution: 1.0
ug/ml