

Product datasheet for **TA333984**

SLC13A2 Rabbit Polyclonal Antibody

Product data:

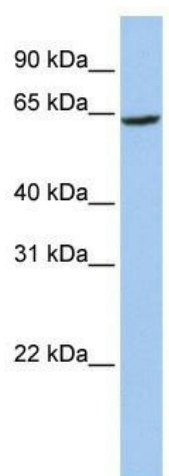
Product Type:	Primary Antibodies
Applications:	IHC, WB
Recommended Dilution:	WB, IHC
Reactivity:	Human
Host:	Rabbit
Isotype:	IgG
Clonality:	Polyclonal
Immunogen:	The immunogen for Anti-SLC13A2 Antibody: synthetic peptide directed towards the middle region of human SLC13A2. Synthetic peptide located within the following region: PNAKGESMVSDGTVAIFIGIIMFIIPSKFPGLTQDPENPGKLGKAPLGLLD
Formulation:	Liquid. Purified antibody supplied in 1x PBS buffer with 0.09% (w/v) sodium azide and 2% sucrose. <i>Note that this product is shipped as lyophilized powder to China customers.</i>
Purification:	Affinity Purified
Conjugation:	Unconjugated
Storage:	Store at -20°C as received.
Stability:	Stable for 12 months from date of receipt.
Predicted Protein Size:	64 kDa
Gene Name:	solute carrier family 13 member 2
Database Link:	NP_003975 Entrez Gene 9058 Human Q13183
Background:	SLC13A2 belongs to the SLC13A transporter (TC 2.A.47) family, NADC subfamily. It is a multi-pass membrane protein. SLC13A2 cotransports of sodium ions and dicarboxylates such as succinate and citrate.
Synonyms:	NaCT; NaDC-1; NADC1; SDCT1
Note:	Immunogen sequence homology: Human: 100%; Rat: 93%; Rabbit: 85%; Pig: 79%; Bovine: 79%; Dog: 77%; Guinea pig: 75%



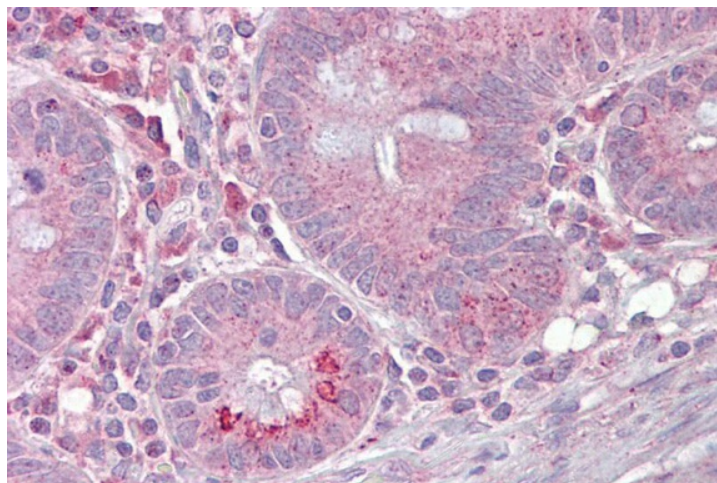
[View online »](#)

Protein Families: Transmembrane

Product images:



WB Suggested Anti-SLC13A2 Antibody Titration:
0.2-1 ug/ml; ELISA Titer: 1:1562500; Positive
Control: 721_B cell lysate



Small intestine