

## Product datasheet for **TA333983**

### FGF13 Rabbit Polyclonal Antibody

#### Product data:

Product Type:	Primary Antibodies
Applications:	WB
Recommended Dilution:	WB
Reactivity:	Human
Host:	Rabbit
Isotype:	IgG
Clonality:	Polyclonal
Immunogen:	The immunogen for Anti-FGF13 Antibody: synthetic peptide directed towards the middle region of human FGF13. Synthetic peptide located within the following region: TKLYSRQGYHLQLQADGTIDGTDKDEDSTYTLFNLIPVGLRWVAIQGVQTK
Formulation:	Liquid. Purified antibody supplied in 1x PBS buffer with 0.09% (w/v) sodium azide and 2% sucrose. <i>Note that this product is shipped as lyophilized powder to China customers.</i>
Purification:	Affinity Purified
Conjugation:	Unconjugated
Storage:	Store at -20°C as received.
Stability:	Stable for 12 months from date of receipt.
Predicted Protein Size:	27 kDa
Gene Name:	fibroblast growth factor 13
Database Link:	<a href="#">NP_004105</a> <a href="#">Entrez Gene 2258 Human Q92913</a>



[View online »](#)

**Background:** FGF13 is probably involved in nervous system development and function. The protein encoded by this gene is a member of the fibroblast growth factor (FGF) family. FGF family members possess broad mitogenic and cell survival activities, and are involved in a variety of biological processes, including embryonic development, cell growth, morphogenesis, tissue repair, tumor growth, and invasion. This gene is located to a region associated with Borjeson-Forssman-Lehmann syndrome (BFLS), a syndromal X-linked mental retardation, which suggests it may be a candidate gene for familial cases of the BFL syndrome. The function of this gene has not yet been determined. Two alternatively spliced transcripts encoding different isoforms have been described for this gene.

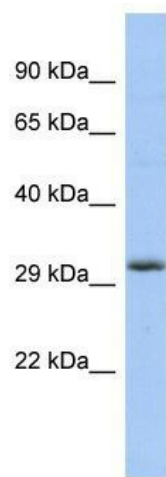
**Synonyms:** FGF-13; FGF2; FHF-2; FHF2

**Note:** Immunogen sequence homology: Dog: 100%; Pig: 100%; Rat: 100%; Horse: 100%; Human: 100%; Mouse: 100%; Bovine: 100%; Rabbit: 100%; Guinea pig: 100%; Zebrafish: 93%; Sheep: 92%

**Protein Families:** Secreted Protein

**Protein Pathways:** MAPK signaling pathway, Melanoma, Pathways in cancer, Regulation of actin cytoskeleton

### Product images:



WB Suggested Anti-FGF13 Antibody Titration: 0.2-1 ug/ml; ELISA Titer: 1: 62500; Positive Control: 293T cell lysate FGF13 is supported by BioGPS gene expression data to be expressed in HEK293T