

## Product datasheet for **TA333982**

### EAAT3 (SLC1A1) Rabbit Polyclonal Antibody

#### Product data:

Product Type:	Primary Antibodies
Applications:	WB
Recommended Dilution:	WB
Reactivity:	Human
Host:	Rabbit
Isotype:	IgG
Clonality:	Polyclonal
Immunogen:	The immunogen for Anti-SLC1A1 Antibody: synthetic peptide directed towards the N terminal of human SLC1A1. Synthetic peptide located within the following region: LDLIRNMFPENLVQACFQYKTKREEVKPPSDPEMNMTEESFTAVMTTAI
Formulation:	Liquid. Purified antibody supplied in 1x PBS buffer with 0.09% (w/v) sodium azide and 2% sucrose. <i>Note that this product is shipped as lyophilized powder to China customers.</i>
Purification:	Affinity Purified
Conjugation:	Unconjugated
Storage:	Store at -20°C as received.
Stability:	Stable for 12 months from date of receipt.
Predicted Protein Size:	57 kDa
Gene Name:	solute carrier family 1 member 1
Database Link:	<a href="#">NP_004161</a> <a href="#">Entrez Gene 6505 Human</a> <a href="#">P43005</a>



[View online »](#)

**Background:**

This gene encodes a member of the high-affinity glutamate transporters that play an essential role in transporting glutamate across plasma membranes. In brain, these transporters are crucial in terminating the postsynaptic action of the neurotransmitter glutamate, and in maintaining extracellular glutamate concentrations below neurotoxic levels. This transporter also transports aspartate, and mutations in this gene are thought to cause dicarboxylicamino aciduria, also known as glutamate-aspartate transport defect. [provided by RefSeq, Mar 2010]

**Synonyms:**

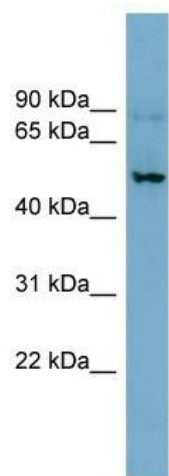
DCBXA; EAAC1; EAAT3; SCZD18

**Note:**

Immunogen sequence homology: Human: 100%; Rat: 92%; Mouse: 85%; Dog: 77%

**Protein Families:**

Druggable Genome, Transmembrane

**Product images:**

WB Suggested Anti-SLC1A1 Antibody Titration:  
0.2-1 ug/ml; Positive Control: PANC1 cell lysate