

Product datasheet for **TA333980**

SLC7A4 Rabbit Polyclonal Antibody

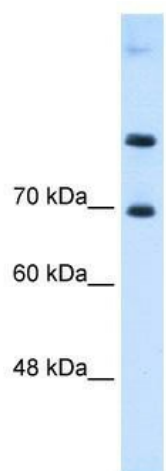
Product data:

Product Type:	Primary Antibodies
Applications:	WB
Recommended Dilution:	WB
Reactivity:	Human
Host:	Rabbit
Isotype:	IgG
Clonality:	Polyclonal
Immunogen:	The immunogen for Anti-SLC7A4 Antibody: synthetic peptide directed towards the middle region of human SLC7A4. Synthetic peptide located within the following region: GAYILVSTVLTLMPWHSALADAFYQRYRWAGFIVAAGSICAMN
Formulation:	Liquid. Purified antibody supplied in 1x PBS buffer with 0.09% (w/v) sodium azide and 2% sucrose.
Purification:	Affinity Purified
Conjugation:	Unconjugated
Storage:	Store at -20°C as received.
Stability:	Stable for 12 months from date of receipt.
Predicted Protein Size:	68 kDa
Gene Name:	solute carrier family 7 member 4
Database Link:	NP_004164 Entrez Gene 6545 Human O43246
Background:	SLC7A4 is involved in the transport of the cationic amino acids (arginine, lysine and ornithine).
Synonyms:	CAT-4; CAT4; HCAT3; VH
Note:	Immunogen sequence homology: Pig: 100%; Rat: 100%; Horse: 100%; Human: 100%; Mouse: 100%; Rabbit: 100%; Guinea pig: 100%; Bovine: 86%; Dog: 85%; Zebrafish: 75%
Protein Families:	Druggable Genome, Transmembrane



[View online »](#)

Product images:



WB Suggested Anti-SLC7A4 Antibody Titration:
0.125 ug/ml; Positive Control: HepG2 cell lysate