

Product datasheet for **TA333979**

SLC9A3 Rabbit Polyclonal Antibody

Product data:

Product Type:	Primary Antibodies
Applications:	WB
Recommended Dilution:	WB
Reactivity:	Human
Host:	Rabbit
Isotype:	IgG
Clonality:	Polyclonal
Immunogen:	The immunogen for Anti-SLC9A3 Antibody: synthetic peptide directed towards the middle region of human SLC9A3. Synthetic peptide located within the following region: AEDMVTHTLQQYLYKPRQEYKHLYSRHELTPTDEKQDREIFHRTMRKR
Formulation:	Liquid. Purified antibody supplied in 1x PBS buffer with 0.09% (w/v) sodium azide and 2% sucrose. <i>Note that this product is shipped as lyophilized powder to China customers.</i>
Purification:	Affinity Purified
Conjugation:	Unconjugated
Storage:	Store at -20°C as received.
Stability:	Stable for 12 months from date of receipt.
Predicted Protein Size:	93 kDa
Gene Name:	solute carrier family 9 member A3
Database Link:	NP_004165 Entrez Gene 6550 Human P48764
Background:	SLC9A3 is involved in pH regulation to eliminate acids generated by active metabolism or to counter adverse environmental conditions. SLC9A3 is the major proton extruding system driven by the inward sodium ion chemical gradient. SLC9A3 plays an important role in signal transduction.
Synonyms:	NHE3

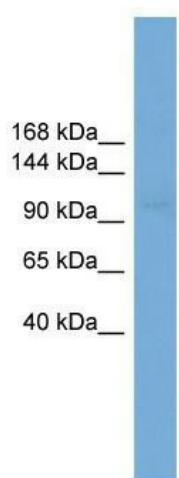


[View online »](#)

Note: Immunogen sequence homology: Human: 100%; Dog: 92%; Rat: 92%; Mouse: 92%; Pig: 77%; Sheep: 77%; Bovine: 77%; Rabbit: 77%

Protein Families: Druggable Genome, Transmembrane

Product images:



WB Suggested Anti-SLC9A3 Antibody Titration:
0.2-1 ug/ml; ELISA Titer: 1:62500; Positive Control:
COLO205 cell lysate