

## Product datasheet for TA333977

### Glyt2 (SLC6A5) Rabbit Polyclonal Antibody

#### Product data:

Product Type:	Primary Antibodies
Applications:	WB
Recommended Dilution:	WB
Reactivity:	Human
Host:	Rabbit
Isotype:	IgG
Clonality:	Polyclonal
Immunogen:	The immunogen for Anti-SLC6A5 Antibody: synthetic peptide directed towards the middle region of human SLC6A5. Synthetic peptide located within the following region: LIVTCTNSATSIFAGFVIFSVIGFMANERKVNIENVADQGGPIAFVWYPE
Formulation:	Liquid. Purified antibody supplied in 1x PBS buffer with 0.09% (w/v) sodium azide and 2% sucrose.
Purification:	Affinity Purified
Conjugation:	Unconjugated
Storage:	Store at -20°C as received.
Stability:	Stable for 12 months from date of receipt.
Predicted Protein Size:	87 kDa
Gene Name:	solute carrier family 6 member 5
Database Link:	<a href="#">NP_004202</a> <a href="#">Entrez Gene 9152 Human</a> <a href="#">Q9Y345</a>
Background:	This gene encodes a sodium- and chloride-dependent glycine neurotransmitter transporter. This integral membrane glycoprotein is responsible for the clearance of extracellular glycine during glycine-mediated neurotransmission. This protein is found in glycinergic axons and maintains a high presynaptic pool of neurotransmitter at glycinergic synapses. Mutations in this gene cause hyperekplexia; a heterogenous neurological disorder characterized by exaggerated startle responses and neonatal apnea. [provided by RefSeq, Oct 2009]
Synonyms:	GLYT-2; GLYT2; HKPX3; NET1

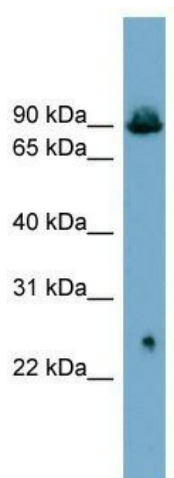


[View online »](#)

**Note:** Immunogen sequence homology: Dog: 100%; Pig: 100%; Rat: 100%; Horse: 100%; Human: 100%; Mouse: 100%; Bovine: 100%; Rabbit: 100%; Guinea pig: 100%; Zebrafish: 79%

**Protein Families:** Transmembrane

**Product images:**



WB Suggested Anti-SLC6A5 Antibody Titration: 0.2-1 ug/ml; Positive Control: PANC1 cell lysate; SLC6A5 is supported by BioGPS gene expression data to be expressed in PANC1