

Product datasheet for **TA333976**

Glyt2 (SLC6A5) Rabbit Polyclonal Antibody

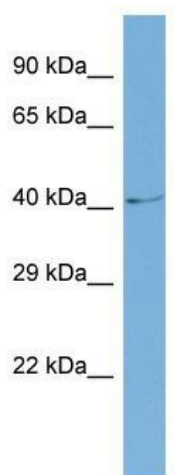
Product data:

Product Type:	Primary Antibodies
Applications:	WB
Recommended Dilution:	WB
Reactivity:	Human
Host:	Rabbit
Isotype:	IgG
Clonality:	Polyclonal
Immunogen:	The immunogen for Anti-SLC6A5 Antibody is: synthetic peptide directed towards the N-terminal region of Human SLC6A5. Synthetic peptide located within the following region: KNSTFCMTAYPNVTMVNFTSQANKTFVSGSEEYFKYFVLKISAGIEYPGE
Formulation:	Liquid. Purified antibody supplied in 1x PBS buffer with 0.09% (w/v) sodium azide and 2% sucrose. <i>Note that this product is shipped as lyophilized powder to China customers.</i>
Purification:	Affinity Purified
Conjugation:	Unconjugated
Storage:	Store at -20°C as received.
Stability:	Stable for 12 months from date of receipt.
Predicted Protein Size:	43 kDa
Gene Name:	solute carrier family 6 member 5
Database Link:	NP_004202 Entrez Gene 9152 Human Q9Y345
Background:	The function of this protein remains unknown.
Synonyms:	GLYT-2; GLYT2; HKPX3; NET1
Note:	Immunogen sequence homology: Dog: 100%; Pig: 100%; Rat: 100%; Horse: 100%; Human: 100%; Mouse: 100%; Bovine: 100%; Rabbit: 100%; Guinea pig: 100%; Zebrafish: 85%
Protein Families:	Transmembrane



[View online »](#)

Product images:



Host: Rabbit; Target Name: SLC6A5; Sample
Tissue: COLO205 Whole cell lysates; Antibody
Dilution: 1.0 ug/ml