

Product datasheet for **TA333975**

ZNF235 Rabbit Polyclonal Antibody

Product data:

Product Type:	Primary Antibodies
Applications:	WB
Recommended Dilution:	WB
Reactivity:	Human
Host:	Rabbit
Isotype:	IgG
Clonality:	Polyclonal
Immunogen:	The immunogen for Anti-ZNF235 Antibody is: synthetic peptide directed towards the N-terminal region of HUMAN ZNF235. Synthetic peptide located within the following region: FRNLVSVGHQSFKPDMSQLEREKELWMKELQTRGKHSQDRNQNMATL
Formulation:	Liquid. Purified antibody supplied in 1x PBS buffer with 0.09% (w/v) sodium azide and 2% sucrose.
Purification:	Affinity Purified
Conjugation:	Unconjugated
Storage:	Store at -20°C as received.
Stability:	Stable for 12 months from date of receipt.
Predicted Protein Size:	81 kDa
Gene Name:	zinc finger protein 235
Database Link:	NP_004225 Entrez Gene 9310 Human Q14590
Background:	This gene product belongs to the zinc finger protein superfamily, members of which are regulatory proteins characterized by nucleic acid-binding zinc finger domains. The encoded protein is a member of the Kruppel family of zinc finger proteins, and contains Kruppel-associated box (KRAB) A and B domains and 15 tandemly arrayed C2H2-type zinc fingers. It is an ortholog of the mouse Zfp93 protein. This gene is located in a cluster of zinc finger genes on 19q13.2.
Synonyms:	ANF270; HZF6; ZFP93; ZNF270

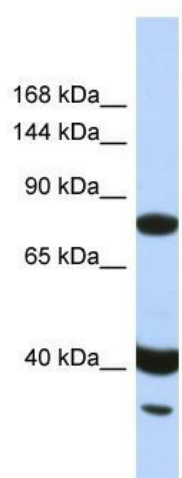


[View online »](#)

Note: Immunogen sequence homology: Human: 100%; Rat: 86%; Mouse: 86%; Rabbit: 86%; Pig: 83%; Guinea pig: 83%

Protein Families: Transcription Factors

Product images:



Host: Rabbit

Target Name: ZNF235

Sample Tissue: HeLa Cell Lysate

Antibody Dilution: 1.0 µg/ml

Host: Rabbit; Target Name: ZNF235; Sample Tissue: HeLa Whole Cell lysates; Antibody Dilution: 1.0 ug/ml