

## Product datasheet for **TA333974**

### EBP50 (SLC9A3R1) Rabbit Polyclonal Antibody

#### Product data:

Product Type:	Primary Antibodies
Applications:	WB
Recommended Dilution:	WB
Reactivity:	Human
Host:	Rabbit
Isotype:	IgG
Clonality:	Polyclonal
Immunogen:	The immunogen for Anti-SLC9A3R1 Antibody is: synthetic peptide directed towards the C-terminal region of Human SLC9A3R1. Synthetic peptide located within the following region: RSASSDTSEELNSQDSPPKQDSTAPSSTSSSDPILDFNISLAMAKERAHQ
Formulation:	Liquid. Purified antibody supplied in 1x PBS buffer with 0.09% (w/v) sodium azide and 2% sucrose. <i>Note that this product is shipped as lyophilized powder to China customers.</i>
Purification:	Affinity Purified
Conjugation:	Unconjugated
Storage:	Store at -20°C as received.
Stability:	Stable for 12 months from date of receipt.
Predicted Protein Size:	39 kDa
Gene Name:	SLC9A3 regulator 1
Database Link:	<a href="#">NP_004243</a> <a href="#">Entrez Gene 9368 Human</a> <a href="#">O14745</a>



[View online »](#)

**Background:**

This gene encodes a sodium/hydrogen exchanger regulatory cofactor. The protein interacts with and regulates various proteins including the cystic fibrosis transmembrane conductance regulator and G-protein coupled receptors such as the beta2-adrenergic receptor and the parathyroid hormone 1 receptor. The protein also interacts with proteins that function as linkers between integral membrane and cytoskeletal proteins. The protein localizes to actin-rich structures including membrane ruffles, microvilli, and filopodia. Mutations in this gene result in hypophosphatemic nephrolithiasis/osteoporosis type 2, and loss of heterozygosity of this gene is implicated in breast cancer.

**Synonyms:**

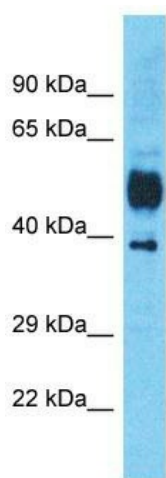
EBP50; NHERF; NHERF-1; NHERF1; NPHLOP2

**Note:**

Immunogen sequence homology: Dog: 100%; Pig: 100%; Horse: 100%; Human: 100%; Mouse: 100%; Bovine: 100%; Rat: 93%; Rabbit: 93%; Guinea pig: 86%

**Protein Families:**

Druggable Genome

**Product images:**

Host: Rabbit

Target Name: SLC9A3R1

Sample Tissue: Esophagus Tumor Lysate

Antibody Dilution: 1.0µg/ml

Host: Rabbit; Target Name: SLC9A3R1; Sample Tissue: Esophagus Tumor lysates; Antibody Dilution: 1.0 ug/ml