

Product datasheet for TA333972

UCP4 (SLC25A27) Rabbit Polyclonal Antibody

Product data:

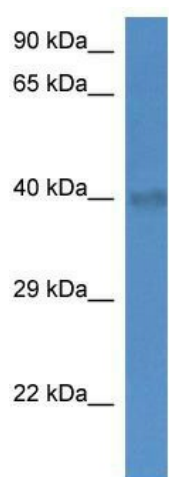
Product Type:	Primary Antibodies
Applications:	WB
Recommended Dilution:	WB
Reactivity:	Mouse
Host:	Rabbit
Isotype:	IgG
Clonality:	Polyclonal
Immunogen:	The immunogen for Anti-Slc25a27 Antibody: synthetic peptide corresponding to a region of Mouse. Synthetic peptide located within the following region: EDNISTHGLSSLCSGLVASILGTPADVIKSRIMNQPRDKQGRGLLYKSSA
Formulation:	Liquid. Purified antibody supplied in 1x PBS buffer with 0.09% (w/v) sodium azide and 2% sucrose. <i>Note that this product is shipped as lyophilized powder to China customers.</i>
Purification:	Affinity Purified
Conjugation:	Unconjugated
Storage:	Store at -20°C as received.
Stability:	Stable for 12 months from date of receipt.
Predicted Protein Size:	36 kDa
Gene Name:	solute carrier family 25 member 27
Database Link:	NP_004268 Entrez Gene 74011 Mouse O95847
Background:	The function remains unknown.
Synonyms:	UCP4
Note:	Immunogen sequence homology: Dog: 100%; Pig: 100%; Rat: 100%; Horse: 100%; Human: 100%; Mouse: 100%; Sheep: 100%; Bovine: 100%; Rabbit: 100%; Guinea pig: 100%; Zebrafish: 85%



[View online »](#)

Protein Families: Druggable Genome

Product images:



WB Suggested Anti-Slc25a27 Antibody; Titration:
1.0 ug/ml; Positive Control: Mouse Brain