

## Product datasheet for **TA333971**

### **BAF53A (ACTL6A) Rabbit Polyclonal Antibody**

#### **Product data:**

Product Type:	Primary Antibodies
Applications:	WB
Recommended Dilution:	WB
Reactivity:	Human, Mouse, Rat
Host:	Rabbit
Isotype:	IgG
Clonality:	Polyclonal
Immunogen:	The immunogen for Anti-ACTL6A Antibody: synthetic peptide directed towards the N terminal of human ACTL6A. Synthetic peptide located within the following region: VDFPTAIGMVVERDDGSTLMEIDGDKGKQGGPTYIDTNALRVPRENMEA
Formulation:	Liquid. Purified antibody supplied in 1x PBS buffer with 0.09% (w/v) sodium azide and 2% sucrose. <i>Note that this product is shipped as lyophilized powder to China customers.</i>
Purification:	Affinity Purified
Conjugation:	Unconjugated
Storage:	Store at -20°C as received.
Stability:	Stable for 12 months from date of receipt.
Predicted Protein Size:	47 kDa
Gene Name:	actin like 6A
Database Link:	<a href="#">NP_004292</a> <a href="#">Entrez Gene 56456 Mouse</a> <a href="#">Entrez Gene 361925 Rat</a> <a href="#">Entrez Gene 86 Human</a> <a href="#">O96019</a>



[View online »](#)

**Background:**

This gene encodes a family member of actin-related proteins (ARPs), which share significant amino acid sequence identity to conventional actins. Both actins and ARPs have an actin fold, which is an ATP-binding cleft, as a common feature. The ARPs are involved in diverse cellular processes, including vesicular transport, spindle orientation, nuclear migration and chromatin remodeling. This gene encodes a 53 kDa subunit protein of the BAF (BRG1/brm-associated factor) complex in mammals, which is functionally related to SWI/SNF complex in *S. cerevisiae* and *Drosophila*; the latter is thought to facilitate transcriptional activation of specific genes by antagonizing chromatin-mediated transcriptional repression. Together with beta-actin, it is required for maximal ATPase activity of BRG1, and for the association of the BAF complex with chromatin/matrix. Three transcript variants that encode two different protein isoforms have been described.

**Synonyms:**

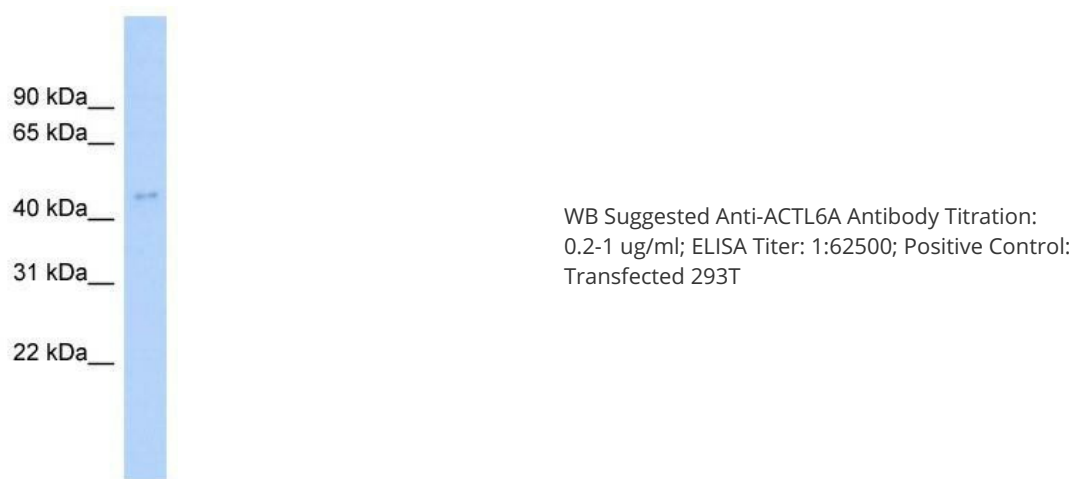
ACTL6; Arp4; ARPN-BETA; BAF53A; INO80K

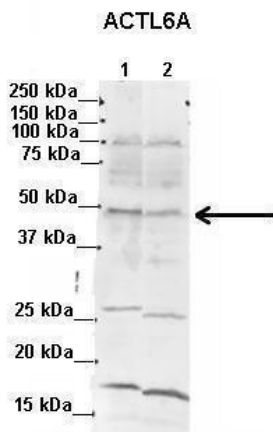
**Note:**

Immunogen sequence homology: Dog: 100%; Pig: 100%; Rat: 100%; Horse: 100%; Human: 100%; Mouse: 100%; Bovine: 100%; Rabbit: 100%; Guinea pig: 100%

**Protein Families:**

Druggable Genome, Transcription Factors

**Product images:**



Lanes: 1. Mouse WT brain extract (80 ug) 2. Rat brain extract (80 ug); Primary Antibody Dilution: ; 2 ug/ml; Secondary Antibody: ; IRDye 800CW goat anti-rabbit from Li-COR Bioscience; Secondary Antibody Dilution: ; 1: 20,000; Gene Name: ; ACTL6A; Submitte

See Immunoblot 2 Data and Customer Feedback for more information