

Product datasheet for **TA333969**

SLC9A5 Rabbit Polyclonal Antibody

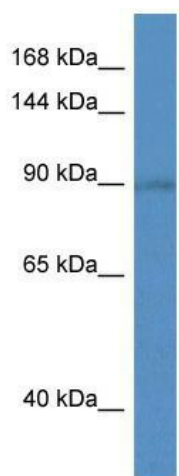
Product data:

Product Type:	Primary Antibodies
Applications:	WB
Recommended Dilution:	WB
Reactivity:	Mouse
Host:	Rabbit
Isotype:	IgG
Clonality:	Polyclonal
Immunogen:	The immunogen for Anti-Slc9a5 Antibody: synthetic peptide corresponding to a region of Mouse. Synthetic peptide located within the following region: SFAFPPSLAKAGRSRSESSADIPQQELQPLMGHKDHTLSPGTANSHWCI
Formulation:	Liquid. Purified antibody supplied in 1x PBS buffer with 0.09% (w/v) sodium azide and 2% sucrose.
Purification:	Affinity Purified
Conjugation:	Unconjugated
Storage:	Store at -20°C as received.
Stability:	Stable for 12 months from date of receipt.
Predicted Protein Size:	99 kDa
Gene Name:	solute carrier family 9 member A5
Database Link:	NP_004585 Entrez Gene 277973 Mouse Q14940
Background:	The function of this protein remains unknown.
Synonyms:	NHE5
Note:	Immunogen sequence homology: Human: 100%; Dog: 93%; Rat: 93%; Rabbit: 93%; Pig: 86%; Horse: 86%; Mouse: 86%; Bovine: 86%
Protein Families:	Druggable Genome, Transmembrane



[View online »](#)

Product images:



WB Suggested Anti-Slc9a5 Antibody; Titration: 1.0 ug/ml; Positive Control: Mouse Brain