

Product datasheet for **TA333967**

TBX6 Rabbit Polyclonal Antibody

Product data:

Product Type:	Primary Antibodies
Applications:	IHC, WB
Recommended Dilution:	WB, IHC
Reactivity:	Human
Host:	Rabbit
Isotype:	IgG
Clonality:	Polyclonal
Immunogen:	The immunogen for Anti-TBX6 Antibody: synthetic peptide directed towards the N terminal of human TBX6. Synthetic peptide located within the following region: AHPPLPLLPPAMGTEPAPSAPEALHSLPGVLSLENRELWKEFSSVGTEM
Formulation:	Liquid. Purified antibody supplied in 1x PBS buffer with 0.09% (w/v) sodium azide and 2% sucrose. <i>Note that this product is shipped as lyophilized powder to China customers.</i>
Purification:	Affinity Purified
Conjugation:	Unconjugated
Storage:	Store at -20°C as received.
Stability:	Stable for 12 months from date of receipt.
Predicted Protein Size:	47 kDa
Gene Name:	T-box 6
Database Link:	NP_004599 Entrez Gene 6911 Human O95947
Background:	The TBX6 gene is a member of a phylogenetically conserved family of genes that share a common DNA-binding domain, the T-box. T-box genes encode transcription factors involved in the regulation of developmental processes. TBX6 is the human ortholog of mouse Tbx6. Knockout experiments in mice indicate that Tbx6 is important for specification of paraxial mesoderm structures.
Synonyms:	SCDO5

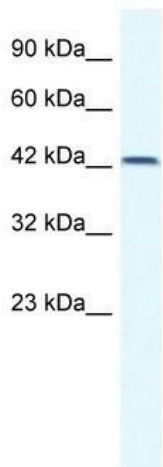


[View online »](#)

Note: Immunogen sequence homology: Pig: 100%; Rat: 100%; Horse: 100%; Human: 100%; Mouse: 100%; Dog: 92%; Bovine: 92%; Guinea pig: 92%

Protein Families: Transcription Factors

Product images:



WB Suggested Anti-TBX6 Antibody Titration: 0.2-1 ug/ml; ELISA Titer: 1:62500; Positive Control: Human Placenta



Human Muscle