

## Product datasheet for **TA333963**

### **MCT7 (SLC16A6) Rabbit Polyclonal Antibody**

#### **Product data:**

Product Type:	Primary Antibodies
Applications:	WB
Recommended Dilution:	WB
Reactivity:	Human
Host:	Rabbit
Isotype:	IgG
Clonality:	Polyclonal
Immunogen:	The immunogen for Anti-SLC16A6 Antibody: synthetic peptide directed towards the middle region of human SLC16A6. Synthetic peptide located within the following region: ILKEKSFICYALFGLFATLGFFAPSLYIPLGISLGIDQDRAAFLSTMA
Formulation:	Liquid. Purified antibody supplied in 1x PBS buffer with 0.09% (w/v) sodium azide and 2% sucrose. <i>Note that this product is shipped as lyophilized powder to China customers.</i>
Purification:	Affinity Purified
Conjugation:	Unconjugated
Storage:	Store at -20°C as received.
Stability:	Stable for 12 months from date of receipt.
Predicted Protein Size:	57 kDa
Gene Name:	solute carrier family 16 member 6
Database Link:	<a href="#">NP_004685</a> <a href="#">Entrez Gene 9120 Human</a> <a href="#">O15403</a>
Background:	SLC16A6 is a proton-linked monocarboxylate transporter. It catalyzes the rapid transport across the plasma membrane of many monocarboxylates such as lactate, pyruvate, branched-chain oxo acids derived from leucine, valine and isoleucine, and the ketone bodies acetoacetate, beta-hydroxybutyrate and acetate.
Synonyms:	MCT6; MCT7

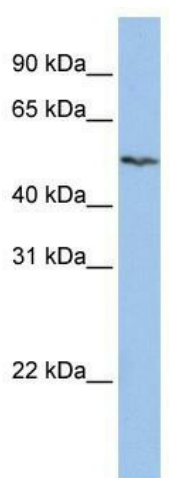


[View online »](#)

**Note:** Immunogen sequence homology: Horse: 100%; Human: 100%; Rabbit: 100%; Pig: 93%; Rat: 93%; Mouse: 93%; Guinea pig: 93%; Dog: 86%; Bovine: 79%

**Protein Families:** Transmembrane

**Product images:**



WB Suggested Anti-SLC16A6 Antibody Titration:  
0.2-1 ug/ml; ELISA Titer: 1:12500; Positive Control:  
HepG2 cell lysate