

Product datasheet for **TA333962**

SLC24A1 Rabbit Polyclonal Antibody

Product data:

Product Type:	Primary Antibodies
Applications:	WB
Recommended Dilution:	WB
Reactivity:	Human
Host:	Rabbit
Isotype:	IgG
Clonality:	Polyclonal
Immunogen:	The immunogen for Anti-SLC24A1 Antibody: synthetic peptide directed towards the middle region of human SLC24A1. Synthetic peptide located within the following region: EQLSRPVAKVMALEDLSKPGDGAIAVDELQDNKKLKLPSLLTRGSSSTS
Formulation:	Liquid. Purified antibody supplied in 1x PBS buffer with 0.09% (w/v) sodium azide and 2% sucrose. <i>Note that this product is shipped as lyophilized powder to China customers.</i>
Purification:	Affinity Purified
Conjugation:	Unconjugated
Storage:	Store at -20°C as received.
Stability:	Stable for 12 months from date of receipt.
Predicted Protein Size:	121 kDa
Gene Name:	solute carrier family 24 member 1
Database Link:	NP_004718 Entrez Gene 9187 Human O60721
Background:	SLC24A1 belongs to a family of potassium-dependent sodium/calcium exchangers. Members of this family have 2 large hydrophilic loops and 2 sets of multiple transmembrane-spanning segments. SLC24A1 belongs to a family of potassium-dependent sodium/calcium exchangers. Members of this family have 2 large hydrophilic loops and 2 sets of multiple transmembrane-spanning segments (Schnetkamp, 2004 [PubMed 14770312]). [supplied by OMIM]
Synonyms:	CSNB1D; HsT17412; NCKX; NCKX1; RODX

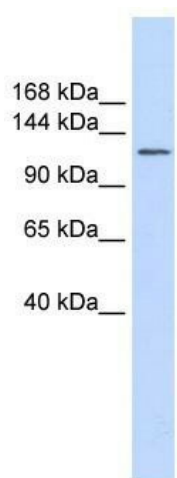


[View online »](#)

Note: Immunogen sequence homology: Human: 100%; Rat: 93%; Dog: 79%

Protein Families: Druggable Genome, Transmembrane

Product images:



WB Suggested Anti-SLC24A1 Antibody Titration:
0.2-1 ug/ml; ELISA Titer: 1:1562500; Positive
Control: Human brain